



LITECON FIREWALL 2"

INSTALLATION GUIDE

AUGUST 2023

VERSION:
AUGUST 2023

PRODUCT:
LITECON FIREWALL 2"

INDEX

BEFORE STARTING	01
LITECON FIREWALL PANEL DIMENSIONS	02
FIREWALL FRAME	03
ALUMINUM BURN CLIP INSTALLATION	04
FIRST ROW AND ADHESIVE APPLICATION	05
LITECON FIREWALL PANEL INSTALLATION	06
MIN OVERLAP AND SECTION A	07
ASSEMBLY FIREWALL	08

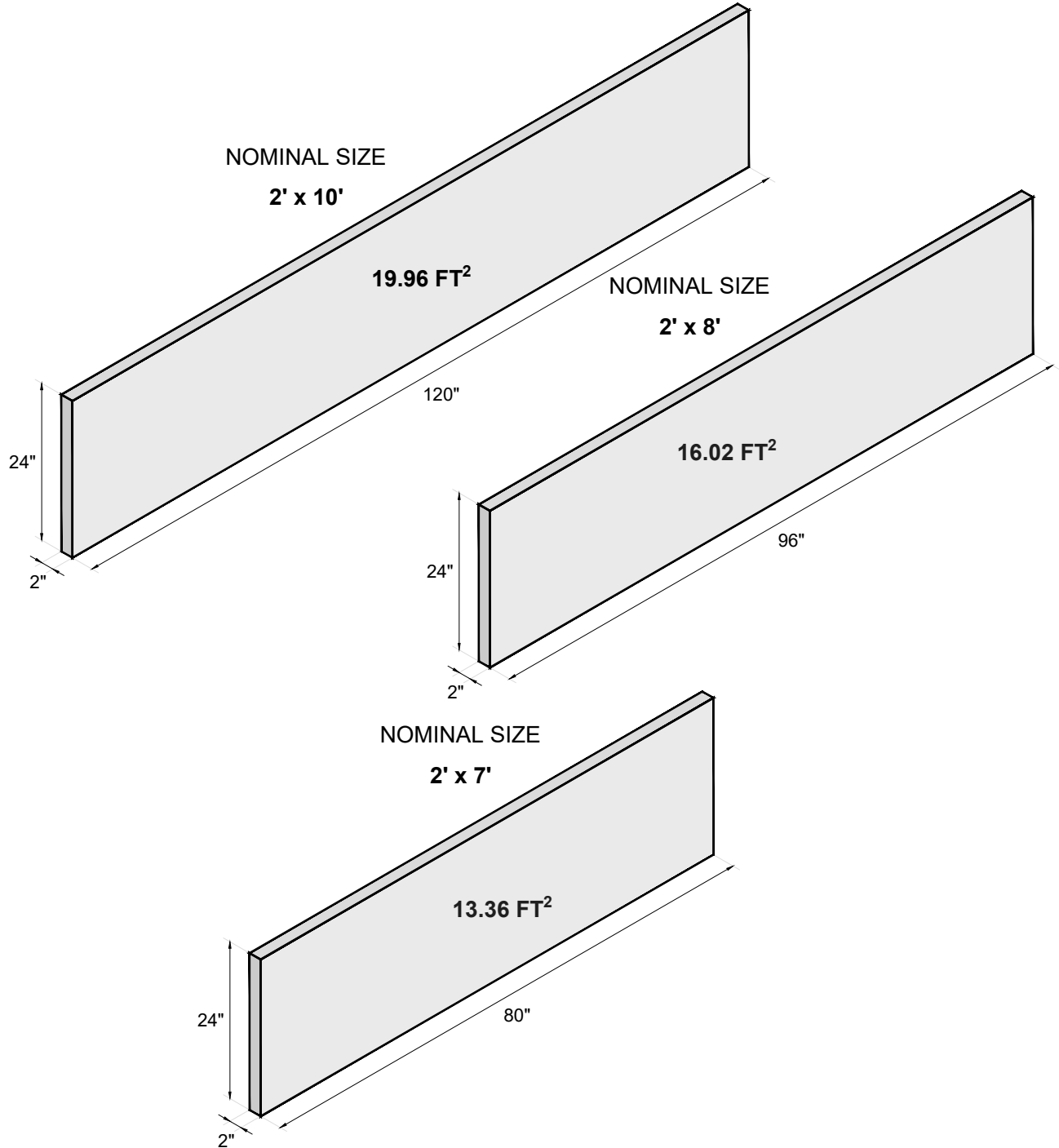
VERSION:
AUGUST 2023

PRODUCT:
LITECON FIREWALL 2"

BEFORE STARTING

-
- 1.- BLUEPRINTS
 - 2.- LITECON FIREWALL
 - 3.- LITECON ADHESIVE
 - 4.- SCREWS: FOR STUD AND LITECON FIREWALL. IN BOTH CASES THE SCREW SHOULD HAVE A COATING THAT PROVIDES CORROSION RESISTANCE.
 - 5.- TAP WATER
 - 6.- ELECTRIC POWER 110/220V
 - 7.- A EMPTY BUCKET
 - 8.- GROUT MIXING PADDLE
 - 9.- ELECTRIC DRILL
 - 10.- BATTERY SCREWDRIVER
 - 11.- RUBBER HAMMER
 - 12.- BUBBLE OR LASER KNIFE
 - 13.- JOINT KNIFE
 - 14.- CIRCULAR SAW
 - 15.- 7" DIAMOND TURBO BLADE
-

LITECON FIREWALL PANEL DIMENSIONS



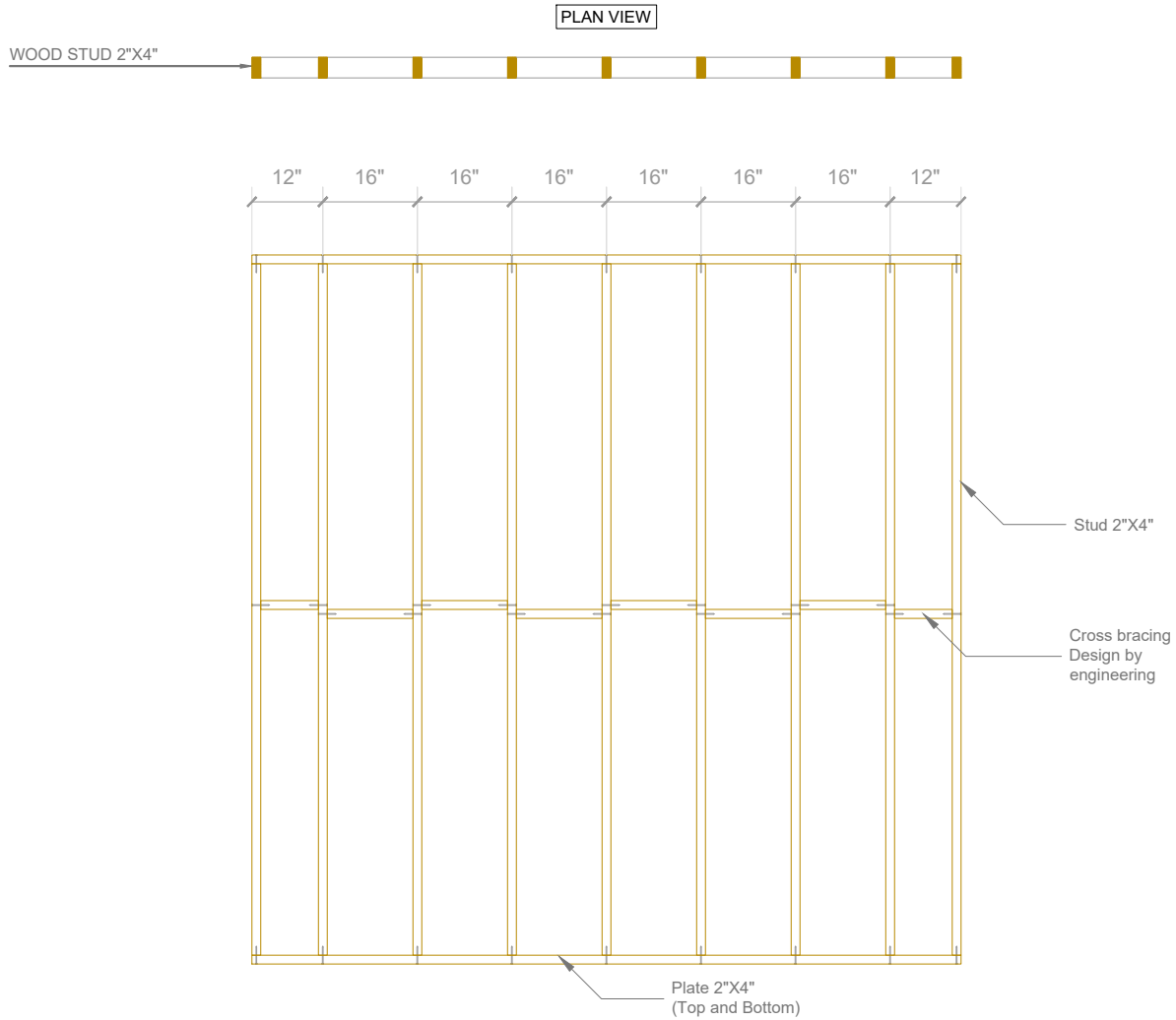
NOTES

1. LENGTH CAN BE ADJUSTED TO CUSTOMERS NEEDS (EVERY 0.2 INCHES) UP TO 120"
2. THE NOMINAL SIZE OF THE LITECON FIREWALL IS 2" X 2' X 10', THE ACTUAL SIZE IS 1.96" X 24.02" X 119.69"
3. THE NOMINAL SIZE OF THE LITECON FIREWALL IS 2" X 2' X 8', THE ACTUAL SIZE IS 1.96" X 24.02" X 96.06"
4. THE NOMINAL SIZE OF THE LITECON FIREWALL IS 2" X 2' X 7', THE ACTUAL SIZE IS 1.96" X 24.02" X 80.12"

VERSION:
AUGUST 2023

PRODUCT:
LITECON FIREWALL 2"

FIREWALL FRAME



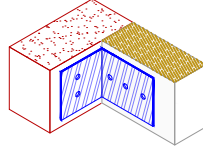
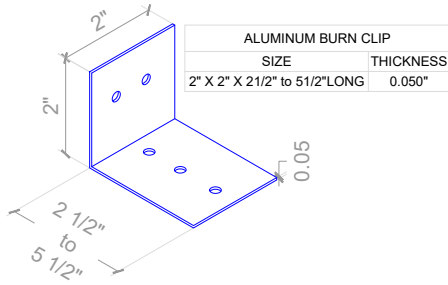
NOTES

- 1.- THE NOMINAL SIZE OF FRAMING STUD IS 2" X 4", THE ACTUAL MEASURE IS 1 ½" X 3 ½"
- 2.- THE NOMINAL SIZE OF FRAMING STUD IS 2" X 6", THE ACTUAL MEASURE IS 1 ½" X 5 ½"

VERSION:
AUGUST 2023

PRODUCT:
LITECON FIREWALL 2"

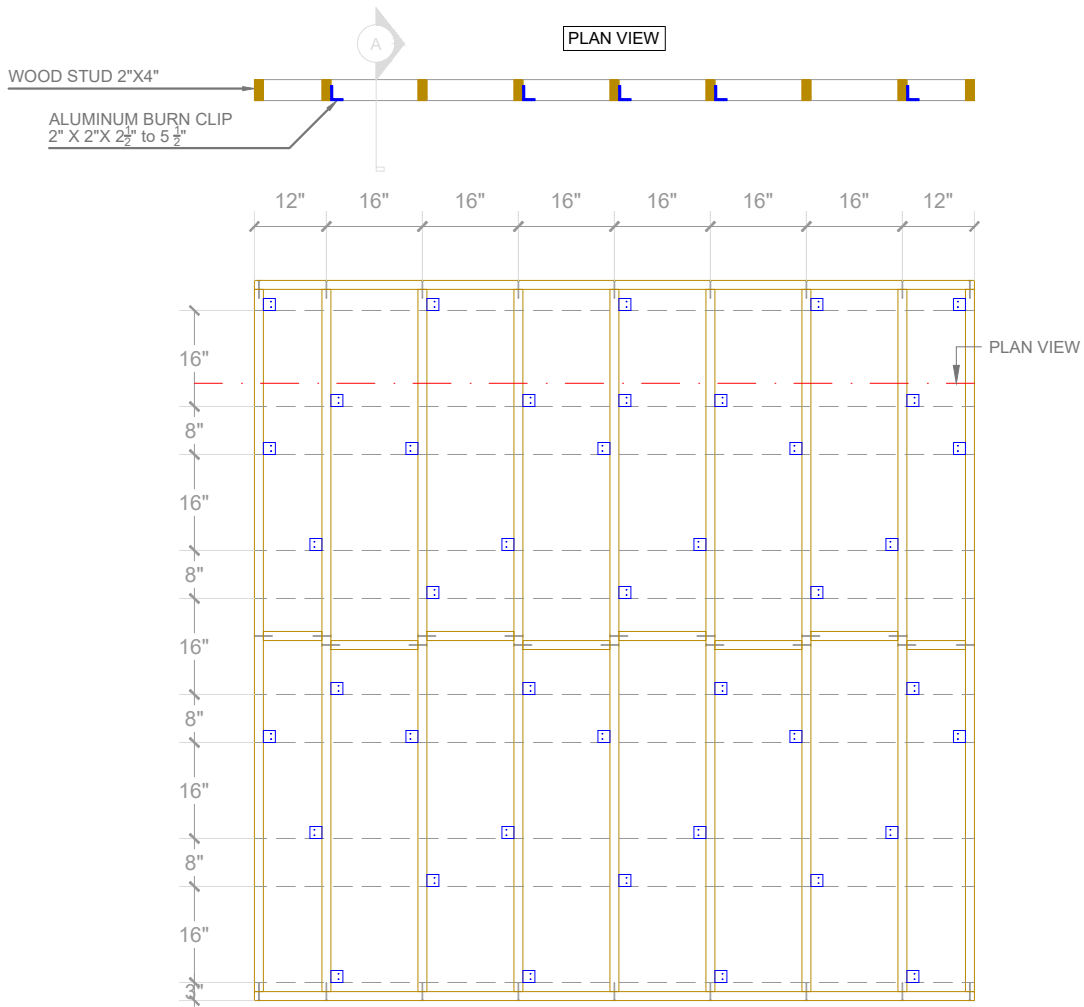
ALUMINUM BURN CLIP INSTALLATION



#6X1-1/4" COARSE DRYWALL SCREW-PHOSPHATE COATED-SHARP POINT

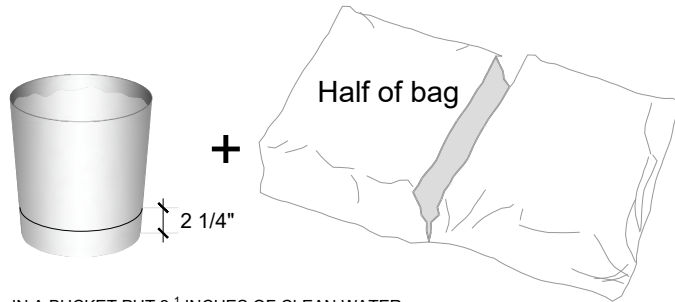


FASTENER FOR STUD

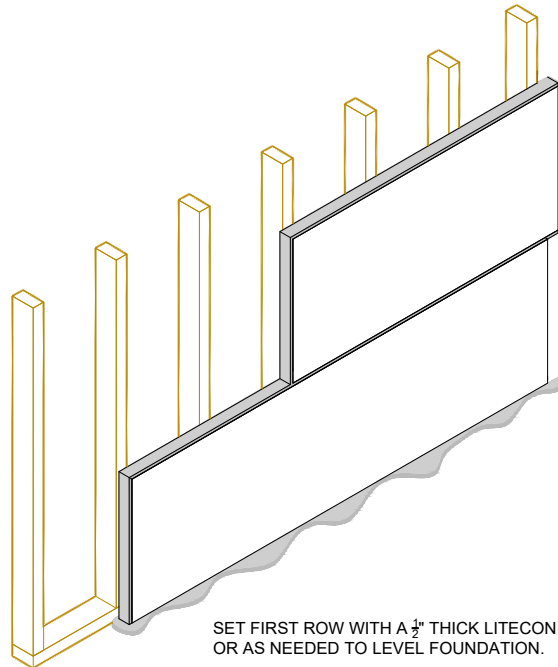


- NOTES**
1. THE INSTALLATION OF CLIPS ON OPPOSITE SIDE SHOULD BE PLACED IN REVERSE ORDER TO AVOID MEETING ANOTHER SCREW FROM THE OPPOSITE SIDE OF THE WALL.
 2. INSTALL THE ALUMINUM BURN CLIP TO WOOD STUD WITH A #6 1-1/4" "W" TYPE FASTENER COATED.
 3. WHEN PANELS ARE INSTALLED VERTICALLY, CLIPS SPACED MAX 16 IN. FROM HORIZONTAL JOINTS AND MAX 4 FT OC VERTICALLY PER PANEL.
 4. WHEN PANELS ARE INSTALLED HORIZONTALLY, CLIPS SPACED MAX 16 IN. FROM VERTICAL JOINTS AND MAX 4 FT OCHORIZONTALLY PER PANEL.
 5. INSTALL THE ALUMINUM BURN CLIP WITH 2 FASTENERS TO WOOD STUD.
 6. THE LONGER SIDE OF THE CLIP MUST BE PLACED ONTO THE WOOD STUD.

FIRST ROW AND ADHESIVE APPLICATION



IN A BUCKET PUT 2 $\frac{1}{4}$ INCHES OF CLEAN WATER,
POUR HALF OF A BAG OF LITECON ADHESIVE.
MIX TO OBTAIN A UNIFORM WORKABLE CONSISTENCY WITH NO
CLUMPS. LET REST FOR 5 MINUTES, MIX AGAIN AND APPLY



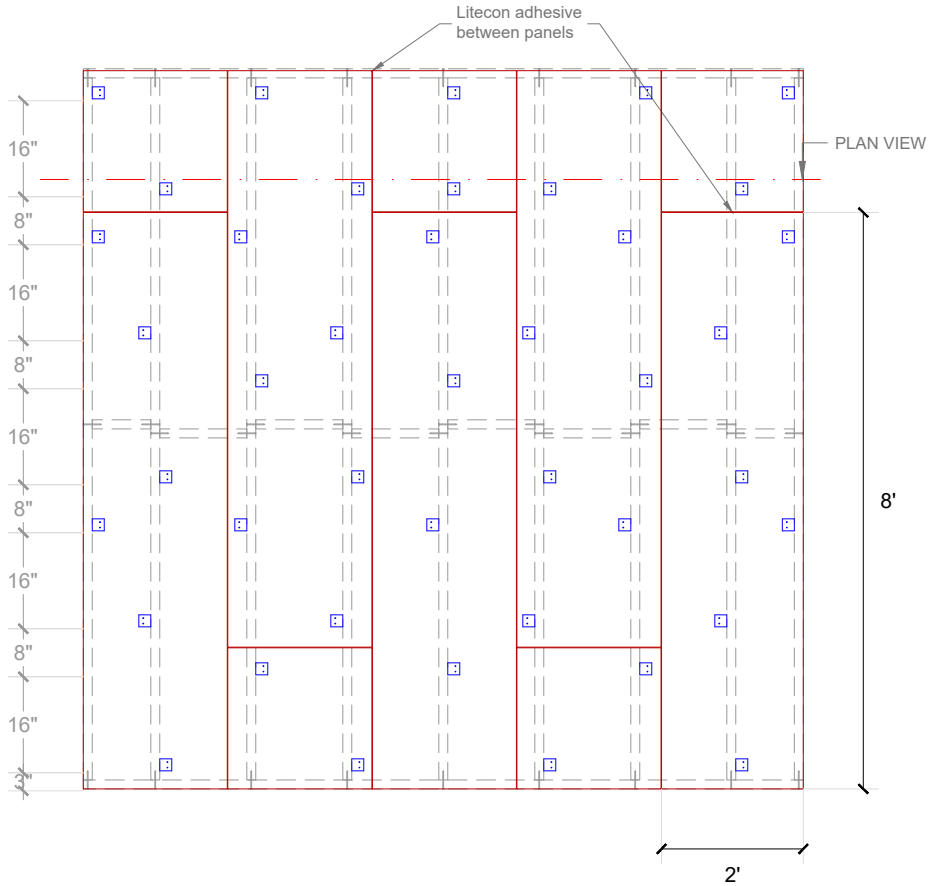
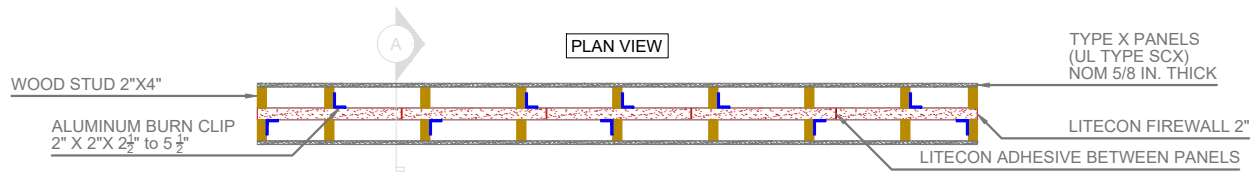
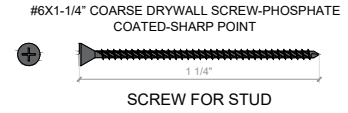
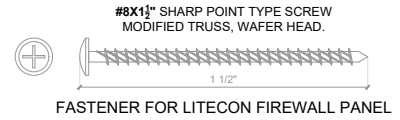
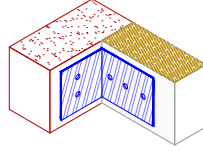
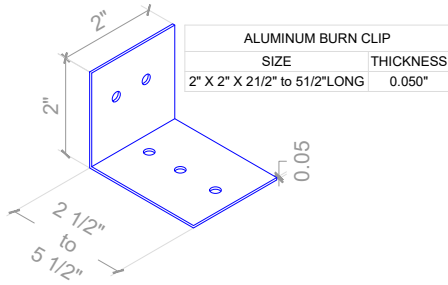
NOTES

1. LEVEL FIRST ROW WITH LITECON ADHESIVE
2. **MAKE SURE TO APPLY ENOUGH ADHESIVE, AT LEAST 1/16\" THROUGHOUT THE ENTIRE MATING FACES**
3. ONCE THE ADHESIVE IS MADE OR MIXED WITH WATER IT SHOULD BE USED WITHIN A MAXIMUM OF 30 MINUTES

VERSION:
AUGUST 2023

PRODUCT:
LITECON FIREWALL 2"

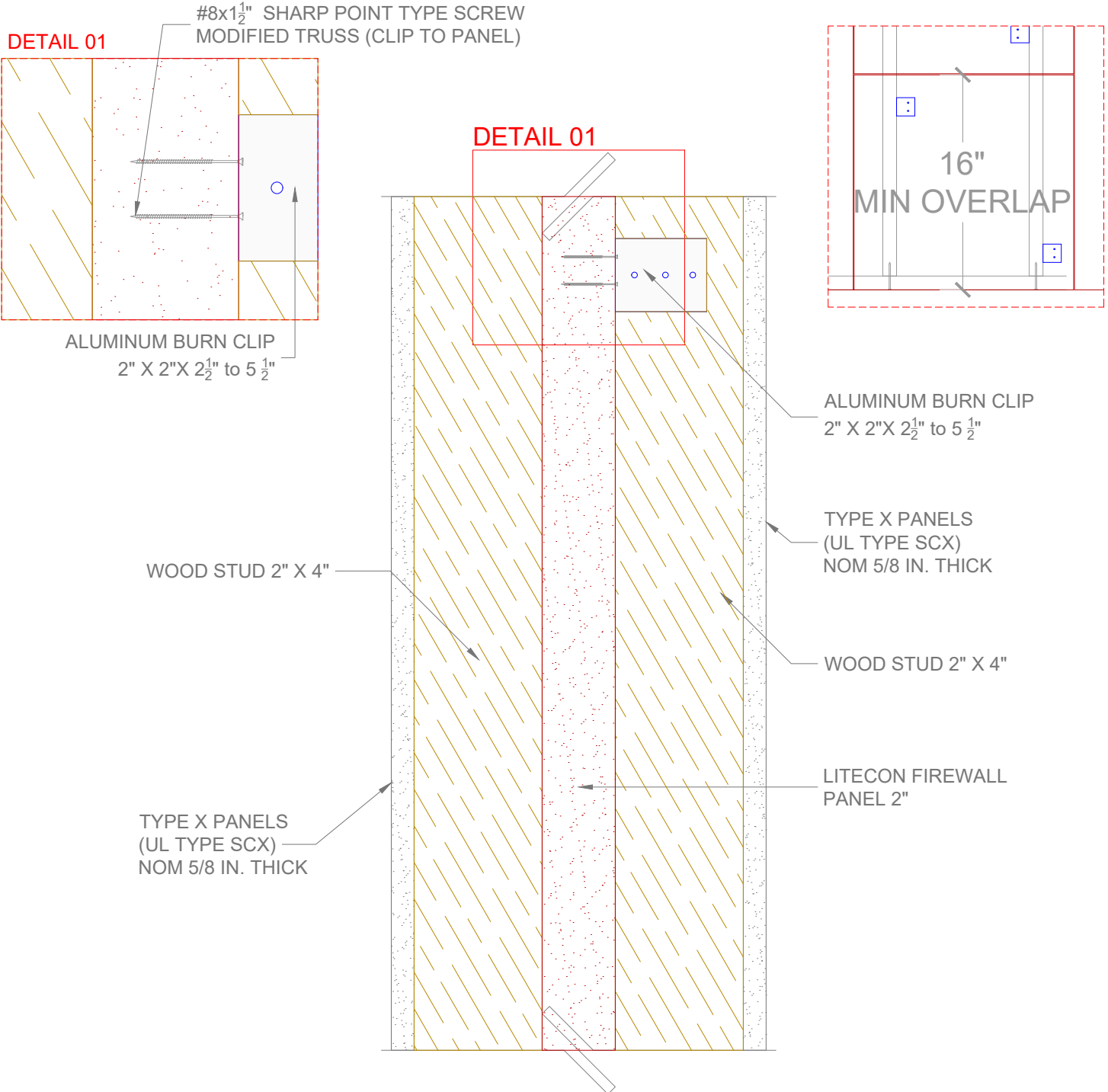
LITECON FIREWALL PANEL INSTALLATION



NOTES

1. INSTALL THE ALUMINUM BURN CLIP TO PANEL WITH A #8x1 1/2" SHARP POINT TYPE SCREW MODIFIED TRUSS, WAFER HEAD.
2. INSTALL 2 FASTENERS TO LITECON FIREWALL PANEL.
3. ALUMINUM BURN CLIPS SPACED MAX 16 IN. FROM HORIZONTAL JOINTS AND 4 FT OC VERTICALLY PER PANEL
4. THE LONGER SIDE OF THE CLIP MUST BE PLACED ONTO THE WOOD STUD.
5. **MAX. 4 IN. AIRSPACE BETWEEN EDGE OF STUD AND PANEL.**
6. 6 CLIPS PER PANEL FACE
7. MINIMUM OF 3 CLIPS PER 7 FT, 8 FT OR 10 FT LONG SIDE
8. MINIMUM OF 2 CLIPS PER 2 FT AND 3 FT PANEL CUT

MIN OVERLAP AND SECTION A



NOTES

1. THE INSTALLATION OF CLIPS ON OPPOSITE SIDE SHOULD BE PLACED IN REVERSE ORDER TO AVOID MEETING ANOTHER SCREW FROM THE OPPOSITE SIDE OF THE WALL
2. INSTALL THE ALUMINUM BURN CLIP TO WOOD STUD WITH A #6x 1-¼" COARSE DRYWALL SCREW
3. INSTALL THE ALUMINUM BURN CLIP TO PANEL WITH A #8X1 ½" SHARP POINT TYPE SCREW MODIFIED TRUSS, WAFER HEAD
4. INSTALL THE ALUMINUM BURN CLIP WITH 2 FASTENERS TO WOOD STUD AND 2 FASTENERS TO THE LITECON FIREWALL PANEL
5. THE LONGER SIDE OF THE CLIP MUST BE PLACED ONTO THE WOOD STUD.
6. MAX. 4 IN. AIRSPACE BETWEEN EDGE OF STUD AND PANEL.

VERSION:
AUGUST 2023

PRODUCT:

LITECON FIREWALL 2" ASSEMBLY FIREWALL

TYPE X PANELS
(UL TYPE SCX)
NOM 5/8 IN. THICK

WOOD STUD 2"X4"

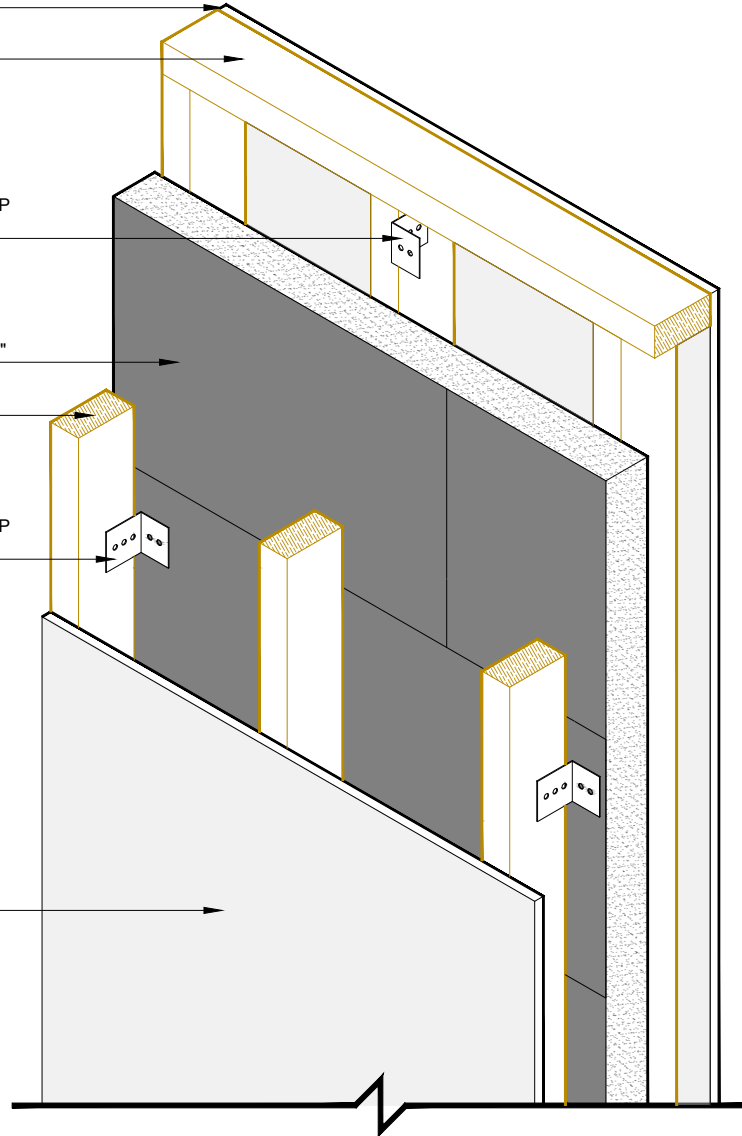
ALUMINUM BURN CLIP
2" X 2" X 2½" to 5 ½"

LITECON FIREWALL 2"

WOOD STUD 2"X4"

ALUMINUM BURN CLIP
2" X 2" X 2½" to 5 ½"

TYPE X PANELS
(UL TYPE SCX)
NOM 5/8 IN. THICK





LITECON FIREWALL 2"

INSTALLATION GUIDE

AUGUST 2023