



## LITECON SUBFLOOR 2" & 3"

INSTALLATION GUIDE

December 2023

## INDEX

---

INDEX	I
INSTALLATION GUIDELINES / BEFORE STARTING	01
LITECON SUBFLOOR DIMENSIONS	02
TYPICAL FRAMING WITH SUPPORTS @ 16" OR 24"	03
ADHESIVE APPLICATION	04
SCHEMATIC INSTALLATION	05
LITECON SUBFLOOR - INSTALLATION	06
FASTENERS DETAILS	07
ASSEMBLY FOR FIRE RESISTENCE WITH JOIST	08
ASSEMBLY FOR FIRE RESISTENCE WITH WOOD TRUSSES	09
ASSEMBLY FOR FIRE RESISTENCE WITH C-JOIST	10
ASSEMBLY FOR FIRE RESISTENCE WITH STEEL TRUSS	11
CONTROL JOINTS	12
SUBFLOOR AND STUD WALL	13
SCREWS AT DIAPHRAGM BOUNDARY	14
SCREWS AT DIAPHRAGM BOUNDARY	15
SUBFLOOR AND CARPET	16

---

VERSION:  
December 2023PRODUCT:  
LITECON SUBFLOOR 2" & 3"

## INSTALLATION GUIDELINES

- THE FOLLOWING DRAWINGS ASSEMBLIES AND CONSTRUCTION DETAILS ARE FOR ILLUSTRATION PURPOSES ONLY.
- CONSULT DESIGN AUTHORITY AND CONFIRM COMPLIANCE CODE.
- LITECON DOES NOT PROVIDE DESIGN SERVICES.
- CHECK PLUMB AND ALIGNMENT OF JOIST OR RAFTER SUPPORTS.
- JOIST, WOOD TRUSSES, C-JOIST OR STEEL TRUSSES. SHALL BE DESIGNED IN ACCORDANCE WITH THE CODE TO SUPPORT THE LOADS, INCLUDING THE SELF-WEIGHT OF THE SUBFLOOR PANELS.

## BEFORE STARTING

---

- 1.- BLUEPRINTS
  - 2.- LITECON FLOOR PANEL 2" Y 3"
  - 3.- LITECON ADHESIVE
  - 5.- SCREW #10 - 4 1/2" LONG (#3 PHILLIPS HEAD)
  - 4.- NAIL 3 1/2"
  - 6.- TAP WATER
  - 7.- ELECTRIC POWER 110/220V
  - 8.- A 5 GAL. EMPTY BUCKET
  - 9.- GROUT MIXING PADDLE
  - 10.- ELECTRIC DRILL
  - 11.- BATTERY SCREWDRIVER
  - 12.- RUBBER HAMMER
  - 13.- BUBBLE OR LASER KNIFE
  - 14.- JOINT KNIFE
  - 15.- CIRCULAR SAW
  - 16.- 7" DIAMOND TURBO BLADE
-

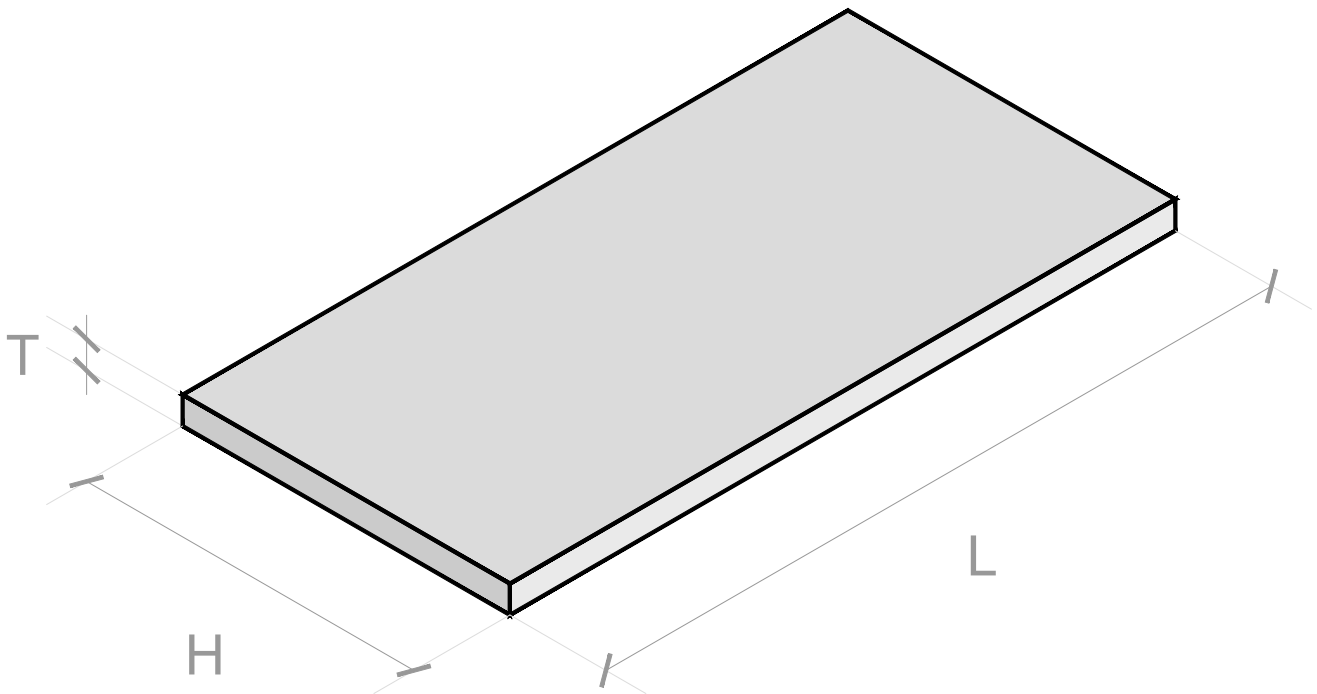
LITECON SUBFLOOR DIMENSIONS

Nominal Size - Subfloor		
Thickness (T)	Height (H)	Length (L)
2"	2'	4'
		5'
		6'
		7'
		8'

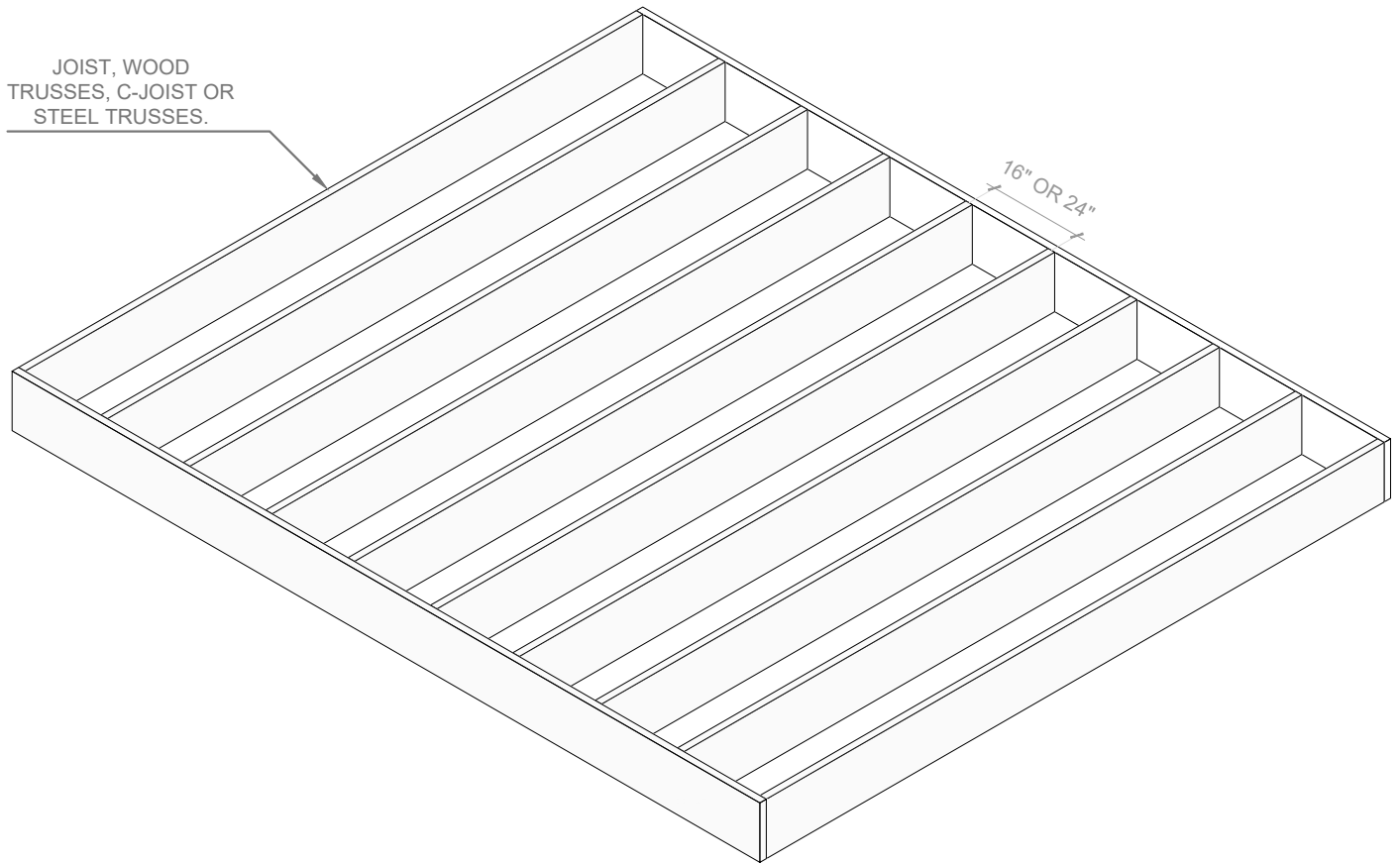
Nominal Size - Subfloor		
Thickness (T)	Height (H)	Length (L)
3"	2'	4'
		5'
		6'
		7'
		8'

Actual Size - Subfloor		
Thickness (T)	Height (H)	Length (L)
1.96"	24.00"	48.00"
		63.98"
		72.05"
		80.12"
		96.00"

Actual Size - Subfloor		
Thickness (T)	Height (H)	Length (L)
2.95"	24.00"	48.00"
		63.98"
		72.05"
		80.12"
		96.00"



## TYPICAL FRAMING WITH SUPPORTS @ 16" OR 24"



### NOTES

1. SUPPORTS SHOULD BE MAXIMUM 24"

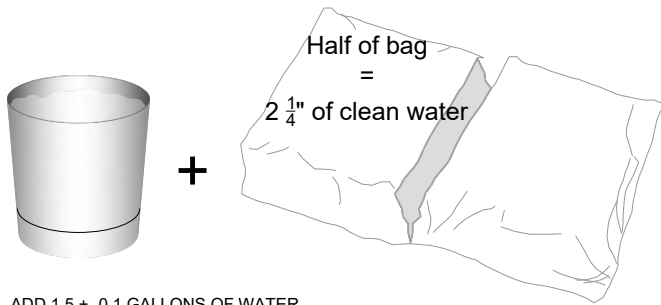
VERSION:  
December 2023

PRODUCT:  
**LITECON SUBFLOOR 2" & 3"**

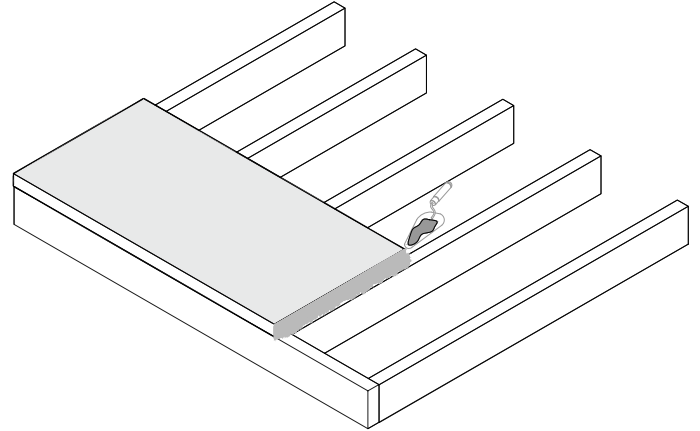
## ADHESIVE APPLICATION



1.- APPLY ENOUGH ADHESIVE, AT LEAST 1/16"  
THROUGHOUT EVERY MATING FACE



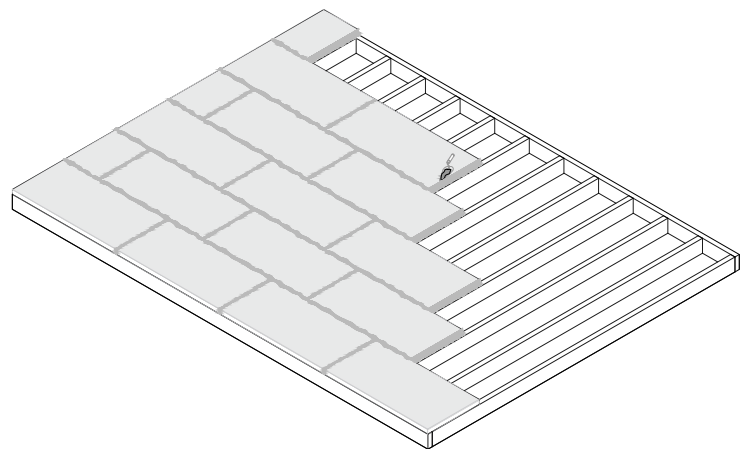
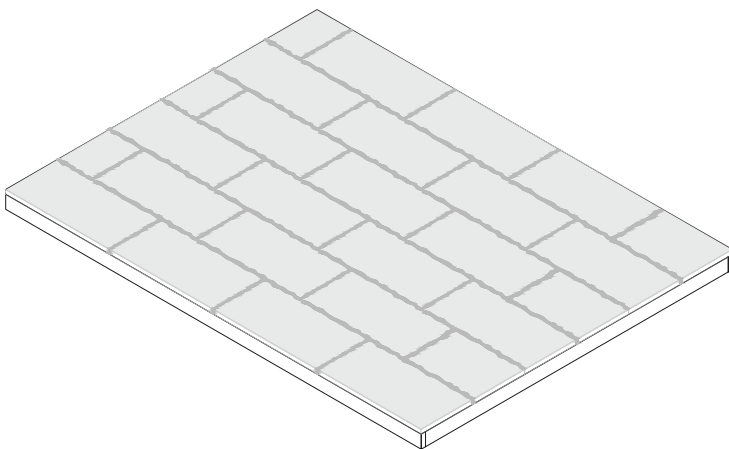
ADD 1.5 +/- 0.1 GALLONS OF WATER  
FOR 1 BAG OF THIN SET MORTAR  
AND MIX THOROUGHLY.



3.- AFTER THE LITECON SUBFLOOR IS INSTALLED  
SMOOTHEN THE AREA WHERE THE LITECON ADHESIVE  
SPAT OUT



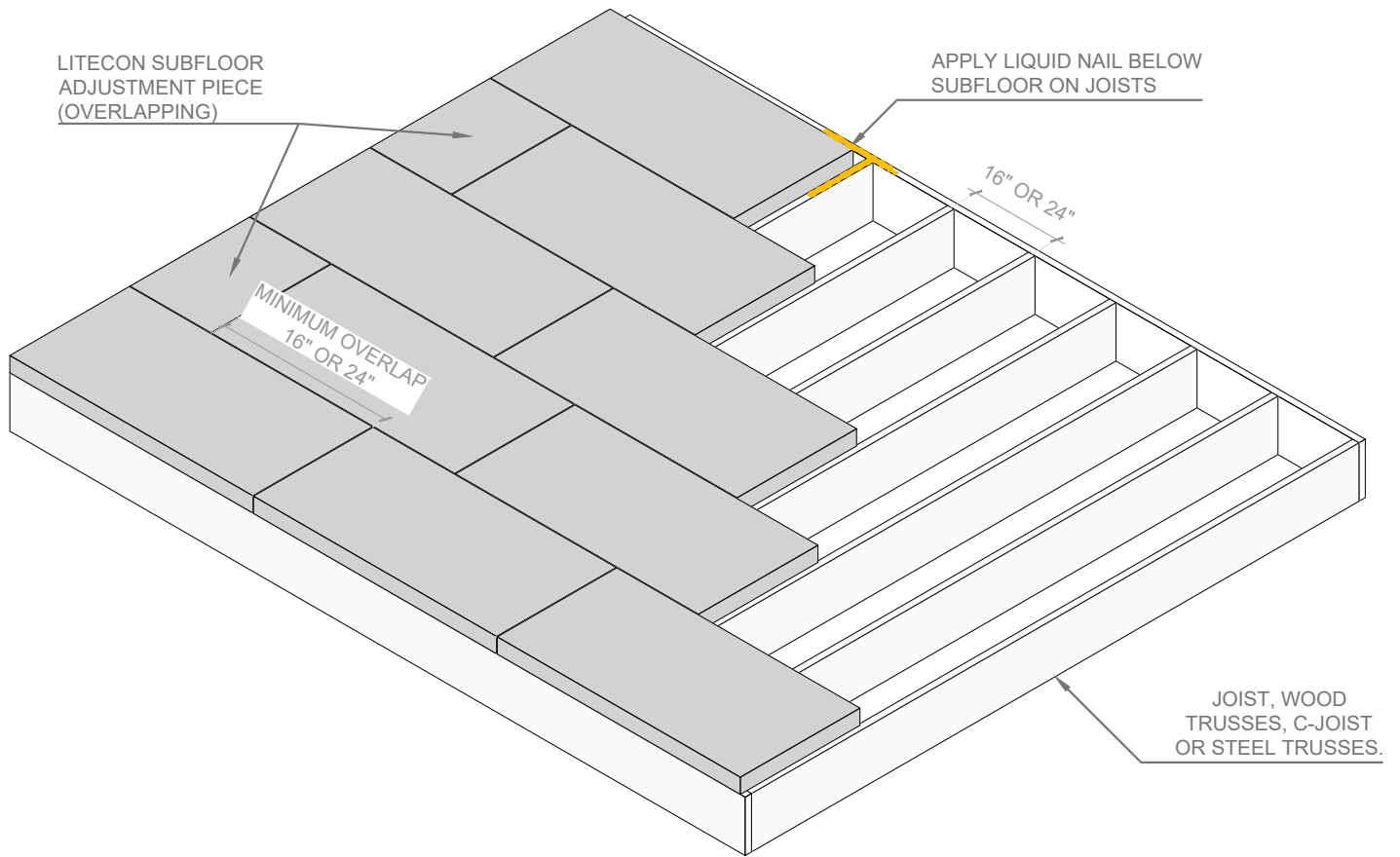
2.- APPLY ENOUGH LITECON ADHESIVE SO THAT  
IT SPITS OUT ONCE THE LITECON SUBFLOOR  
IS INSTALLED



### NOTES

1. MAKE SURE TO APPLY ENOUGH ADHESIVE, AT LEAST 1/16" THROUGHOUT THE ENTIRE MATING FACES
2. ALLOW LITECON ADHESIVE TO DRY FOR A MINIMUM OF 24 HOURS PRIOR TO APPLYING ANY LOAD
3. ONCE THE ADHESIVE IS MADE OR MIXED WITH WATER IT SHOULD BE USED WITHIN A MAXIMUM OF 30 MINUTES

## SCHEMATIC INSTALLATION

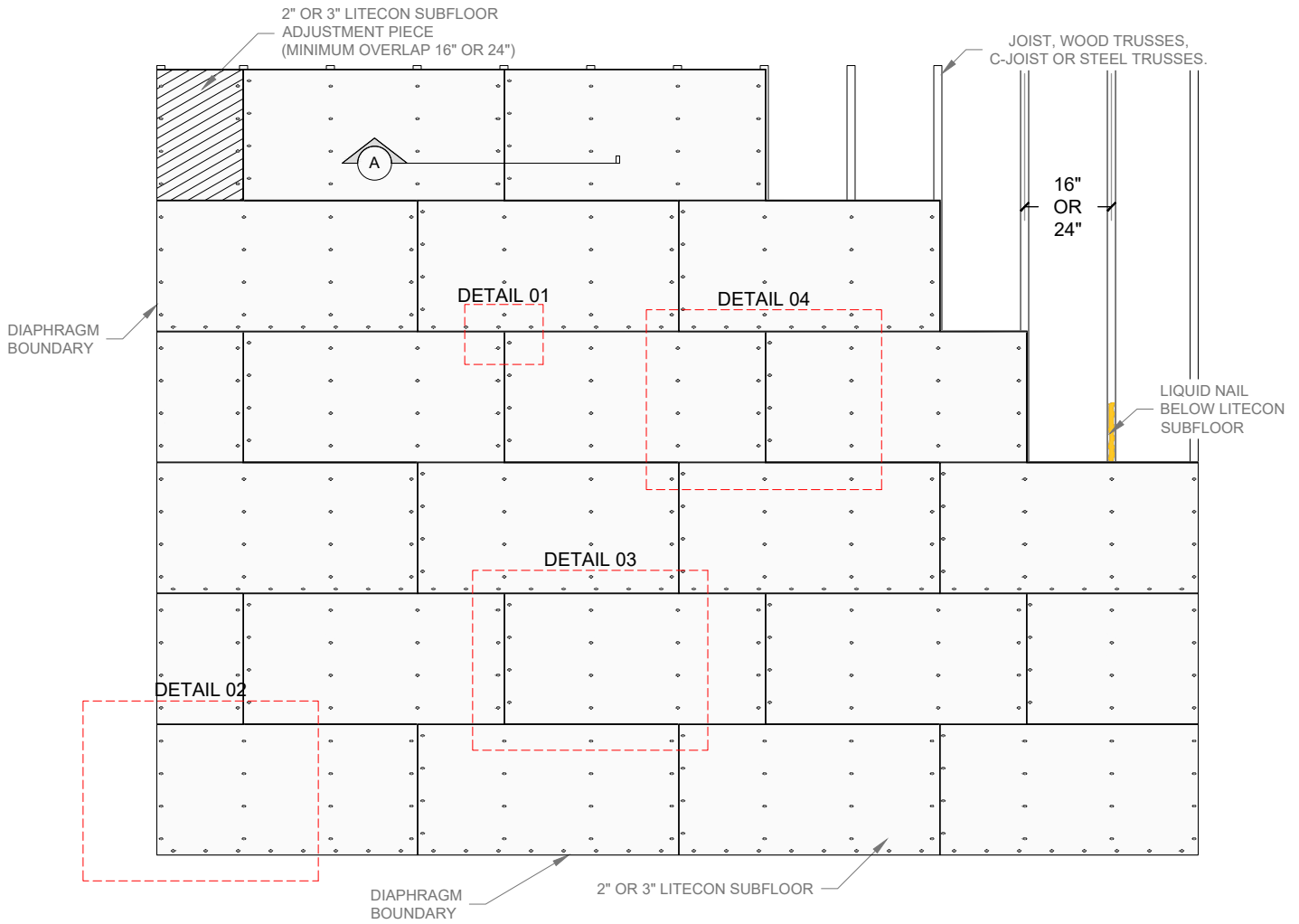
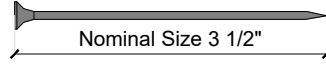


### NOTES

1. LIQUID NAIL HELPS TO PREVENT SQUEAKING

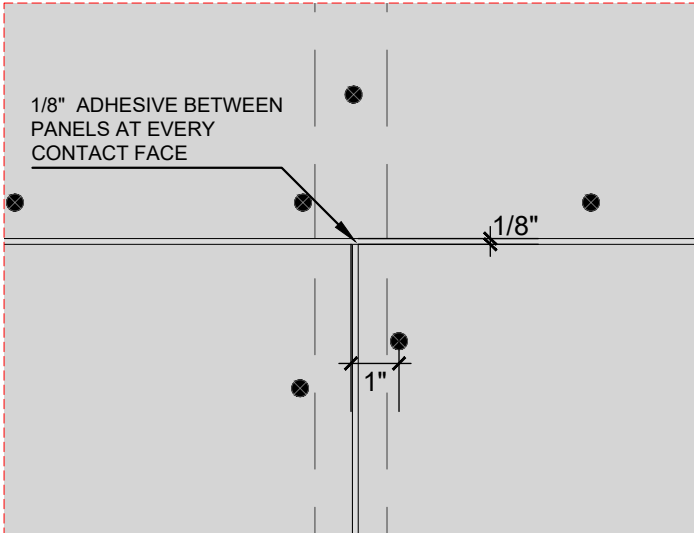
## LITECON SUBFLOOR - INSTALLATION

SCREW FOR STEEL AND SUBFLOOR 2" AND 3"    NAIL FOR WOOD AND SUBFLOOR 2" AND 3"

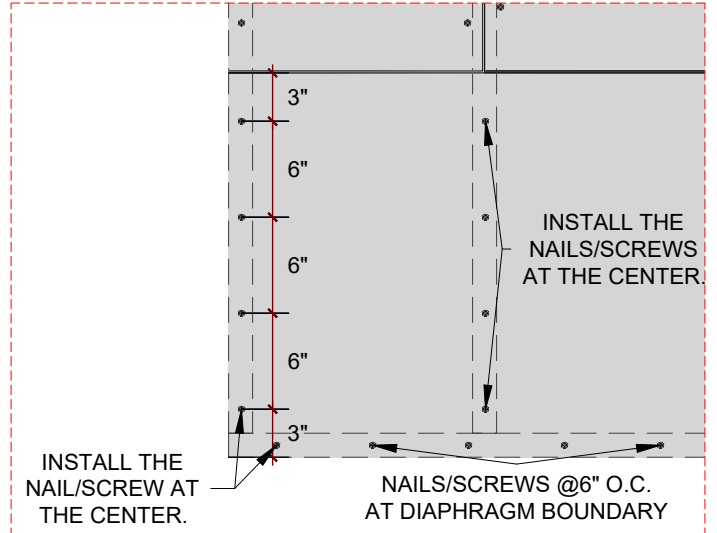




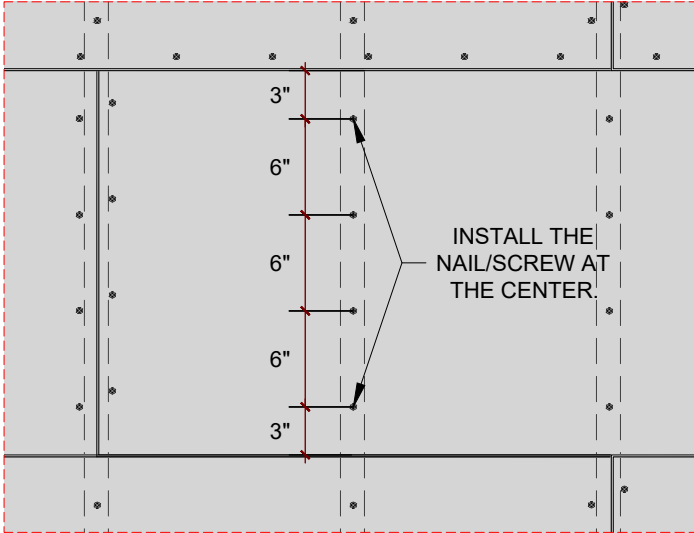
## FASTENERS DETAILS



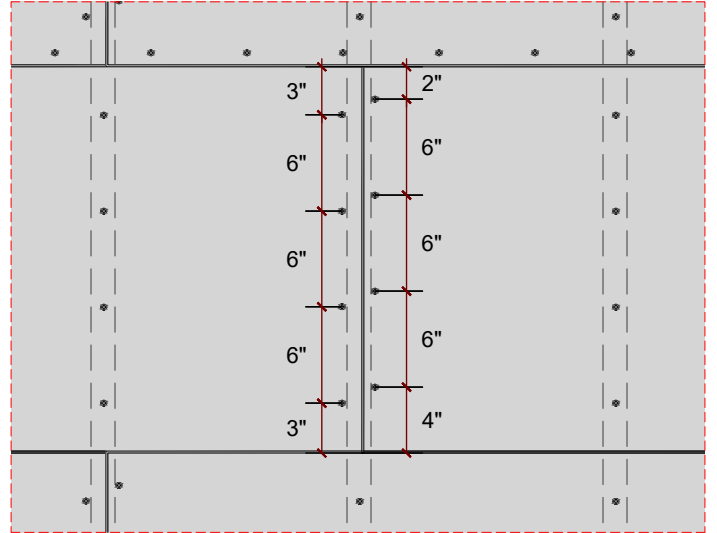
**DETAIL 01**



**DETAIL 02**



**DETAIL 03**



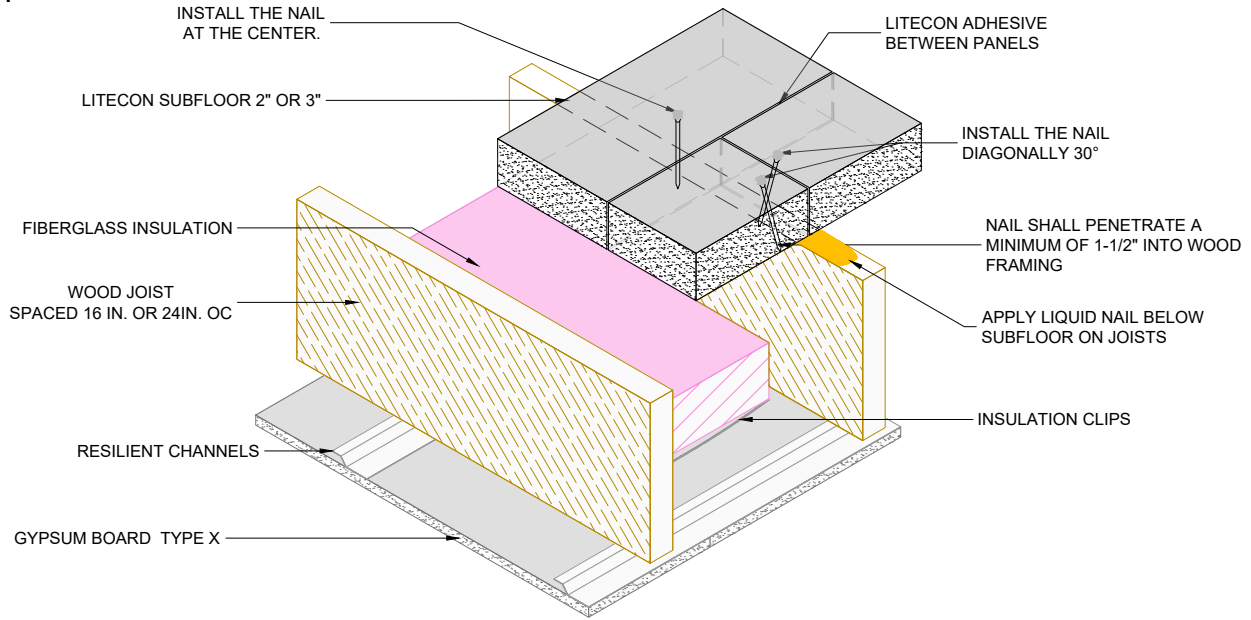
**DETAIL 04**

**NOTES**

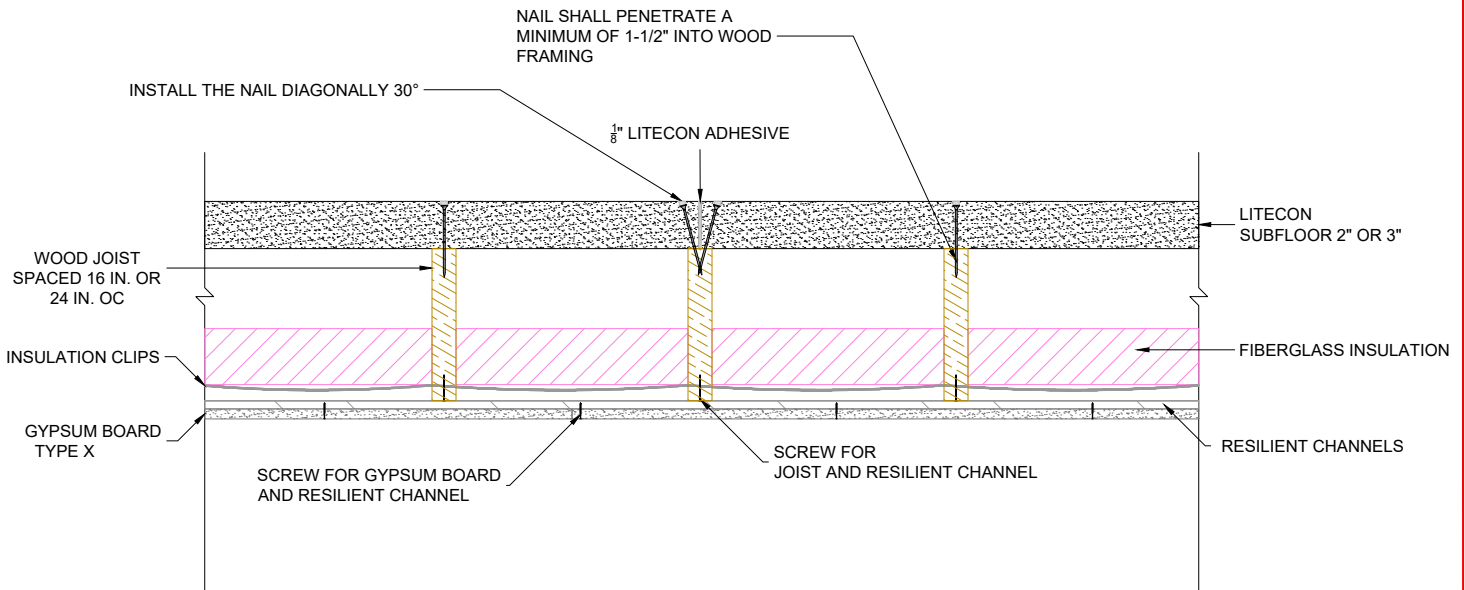
1. NAILS SHALL PENETRATE A MINIMUM OF 1-1/2" INTO FRAMING
2. WHEN DRILLING THROUGH THE PANELS, MAKE SURE THE NAILS ENTERS THE TRUSS/JOIST.

## ASSEMBLY FOR FIRE RESISTANCE WITH JOIST

### DETAIL 1



### SECTION A

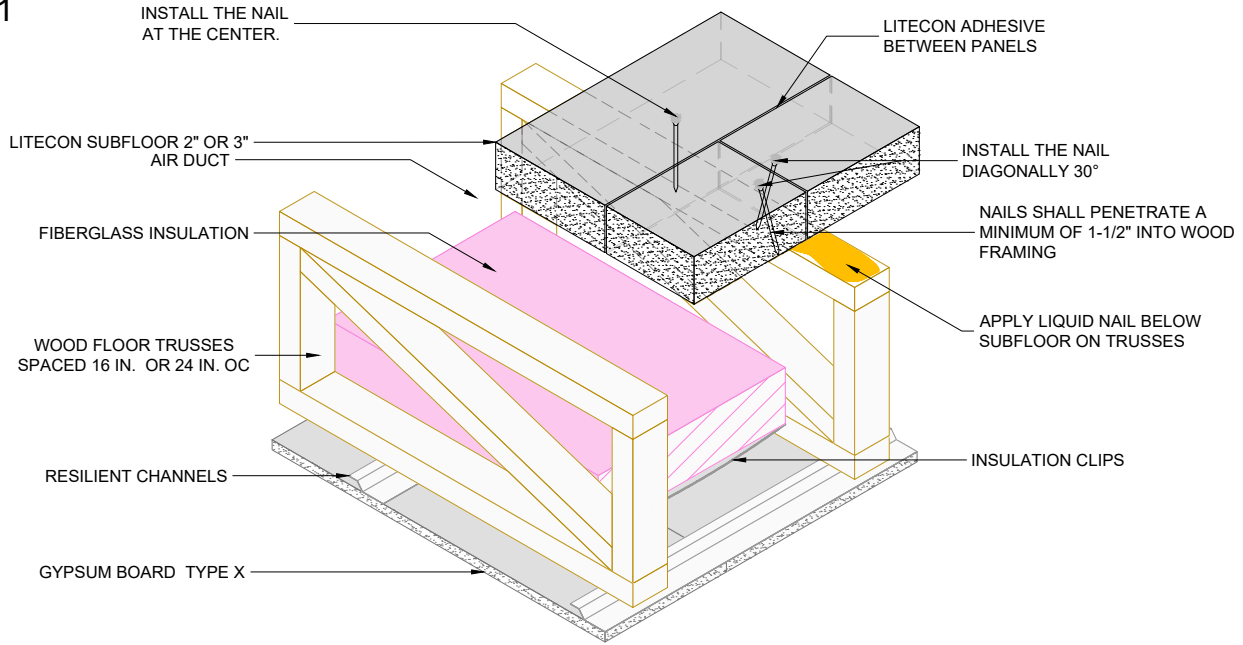


#### NOTES

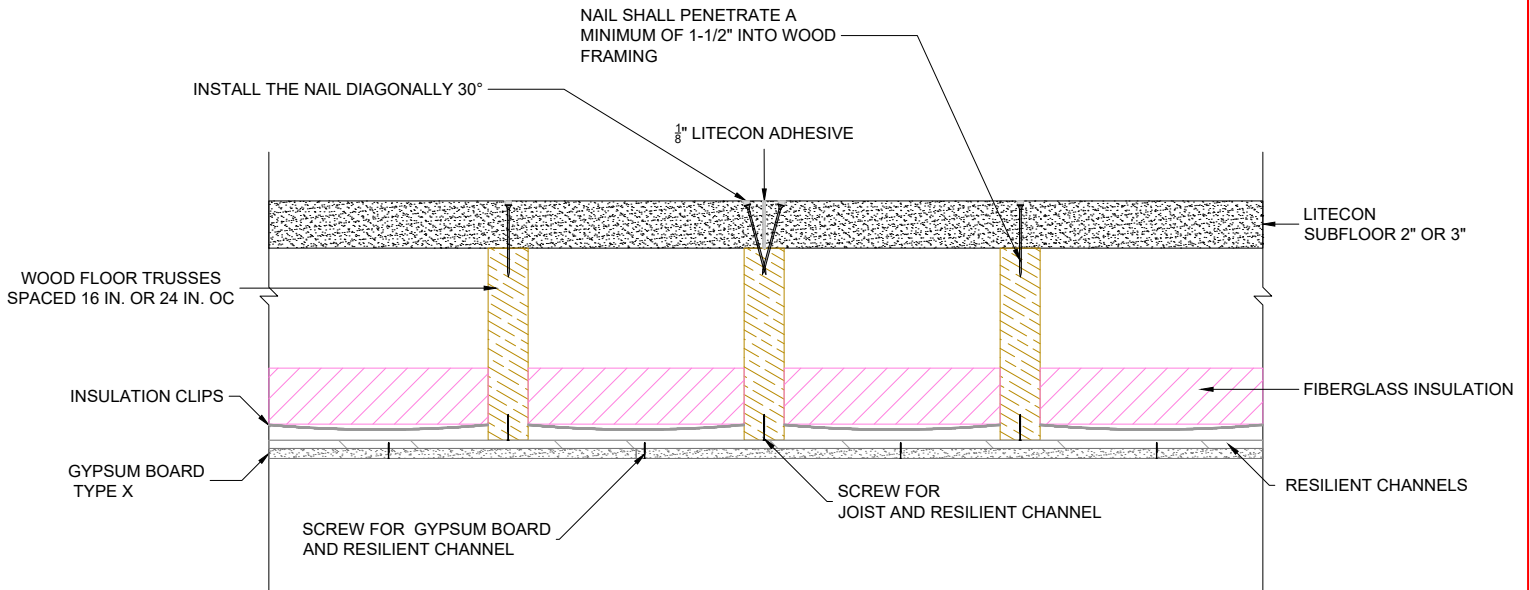
1. FIBERGLASS INSULATION: NOM. 3-1/2 IN. THICK, INSTALLED 1 IN. FROM BOTTOM SURFACE OF WOOD JOISTS.
2. INSULATION CLIPS: NOM 0.087 IN. DIAM STEEL WIRE, FRICTION FITTED BETWEEN WOOD JOISTS, SPACED 18 IN. O.C. AND 2 IN. AWAY FROM EACH END OF THE BATT.
3. RESILIENT CHANNELS: 2-1/2 IN. WIDE BY 1/2 IN. DEEP, FORMED OF NO. 25 MSG GALV STEEL, SPACED 12 IN. OC INSTALLED PERPENDICULAR TO JOISTS.
4. TYPE X PANELS: NOM 5/8 IN. THICK, 4 FT WIDE GYPSUM BOARD.
5. BASE LAYER INSTALLED WITH LONG DIMENSION PERPENDICULAR TO RESILIENT CHANNELS AND SIDE JOINTS CENTERED BETWEEN WOOD JOISTS.

**ASSEMBLY FOR FIRE RESISTENCE WITH WOOD TRUSSES**

**DETAIL 1**



**SECTION A**

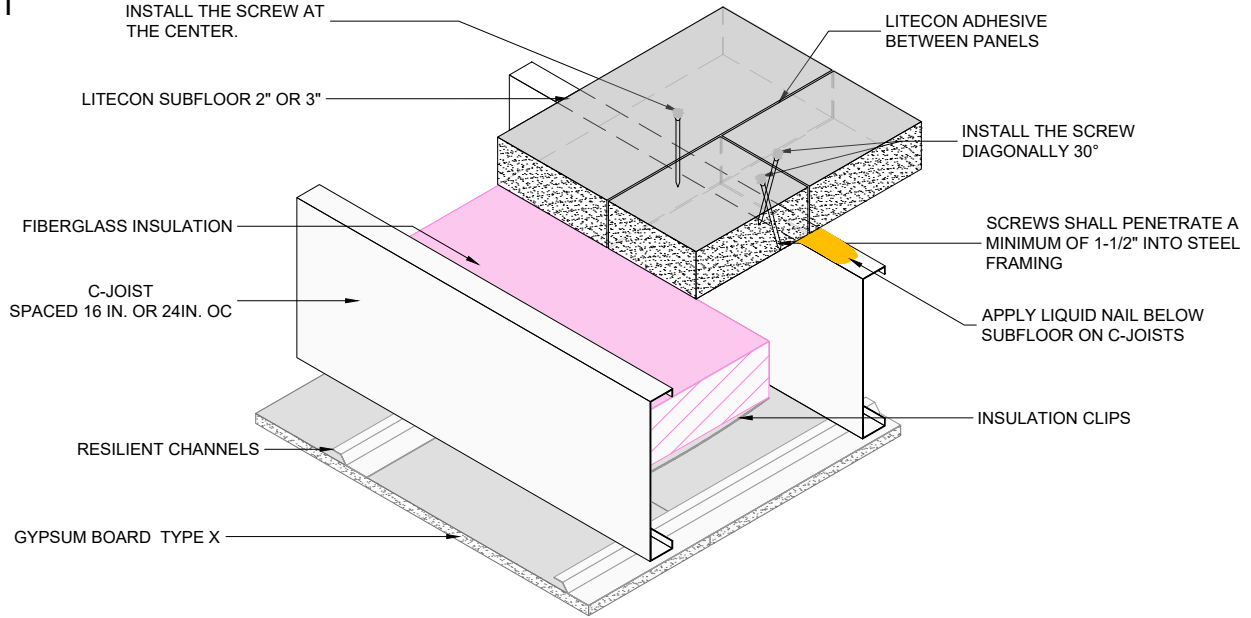


**NOTES**

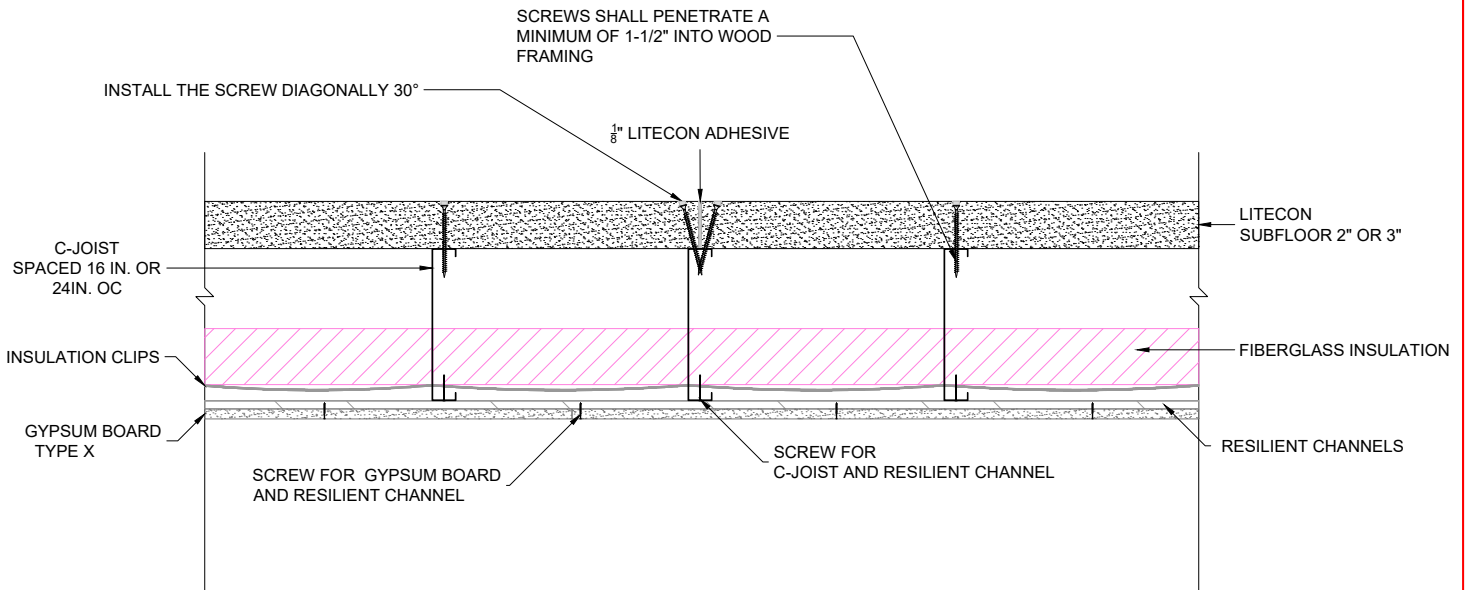
1. FIBERGLASS INSULATION: NOM. 3-1/2 IN. THICK, INSTALLED 1 IN. FROM BOTTOM SURFACE OF WOOD TRUSSES.
2. INSULATION CLIPS: NOM 0.087 IN. DIAM STEEL WIRE, FRICTION FITTED BETWEEN WOOD TRUSSES, SPACED 18 IN. O.C. AND 2 IN. AWAY FROM EACH END OF THE BATT.
3. RESILIENT CHANNELS: 2-1/2 IN. WIDE BY 1/2 IN. DEEP, FORMED OF NO. 25 MSG GALV STEEL, SPACED 12 IN. OC INSTALLED PERPENDICULAR TO TRUSSES.
4. TYPE X PANELS: NOM 5/8 IN. THICK, 4 FT WIDE GYPSUM BOARD.
5. BASE LAYER INSTALLED WITH LONG DIMENSION PERPENDICULAR TO RESILIENT CHANNELS AND SIDE JOINTS CENTERED BETWEEN WOOD TRUSSES.

## ASSEMBLY FOR FIRE RESISTENCE WITH C-JOIST

### DETAIL 1



### SECTION A

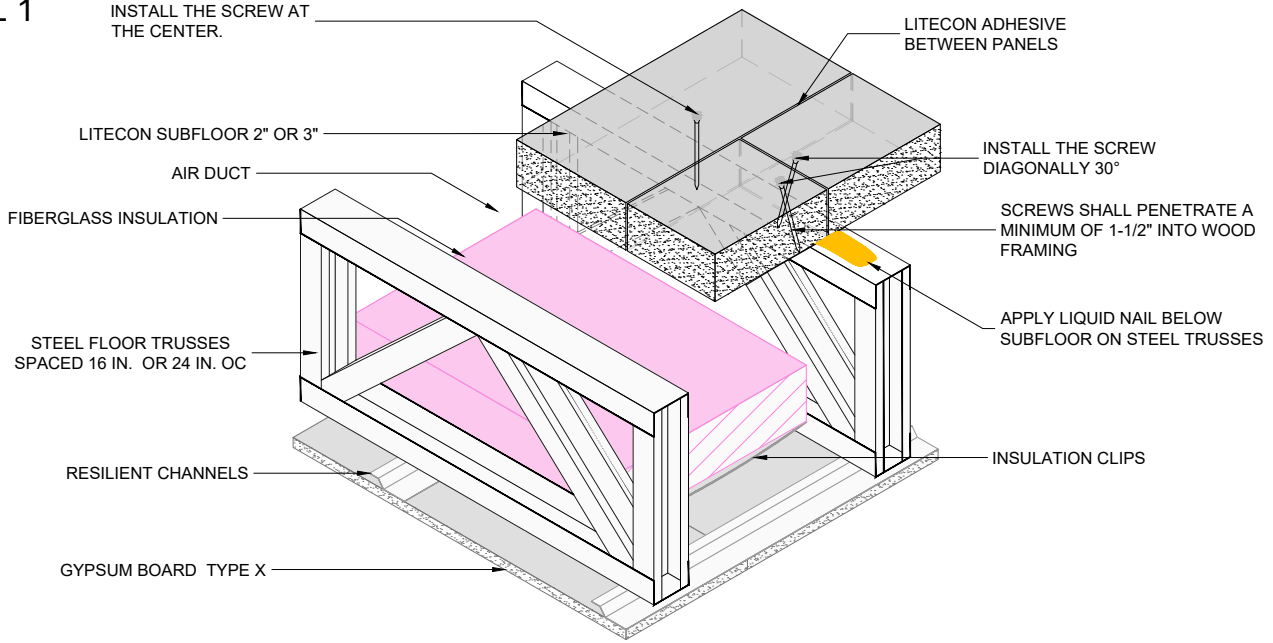


#### NOTES

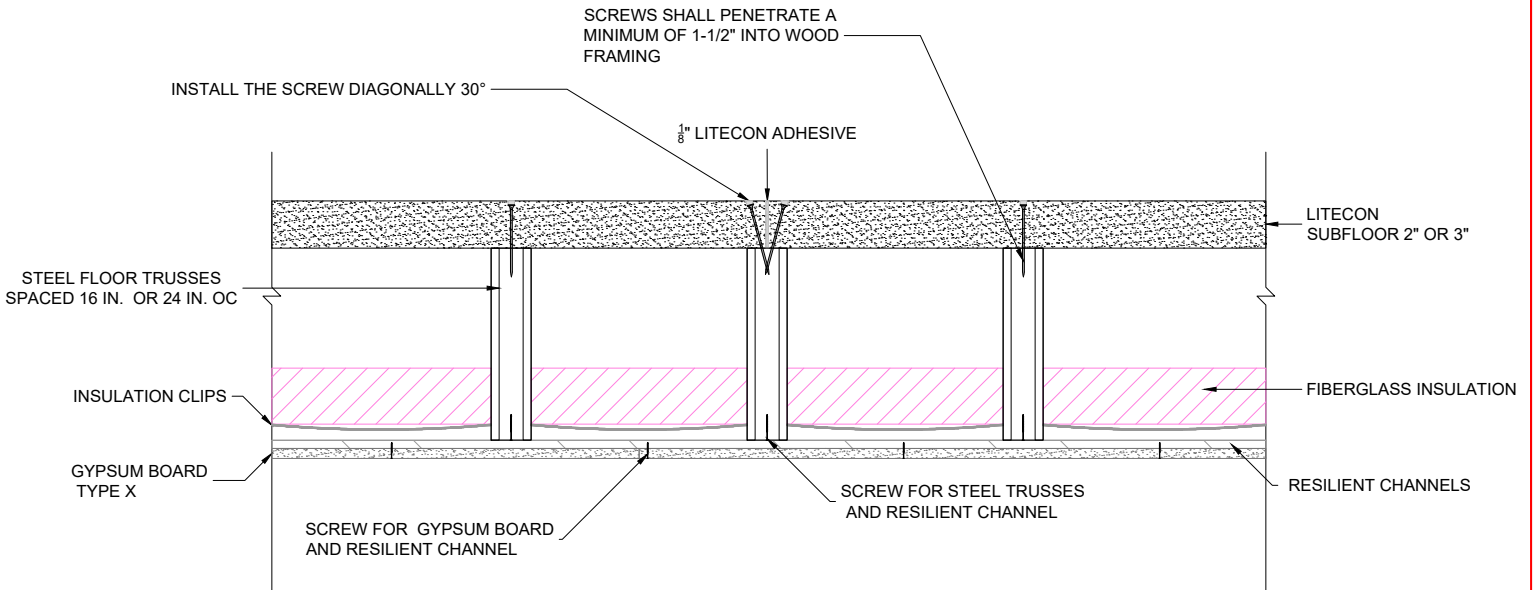
1. FIBERGLASS INSULATION: NOM. 3-1/2 IN. THICK, INSTALLED 1 IN. FROM BOTTOM SURFACE OF C-JOISTS.
2. INSULATION CLIPS: NOM 0.087 IN. DIAM STEEL WIRE, FRICTION FITTED BETWEEN C-JOISTS, SPACED 18 IN. O.C. AND 2 IN. AWAY FROM EACH END OF THE BATT.
3. RESILIENT CHANNELS: 2-1/2 IN. WIDE BY 1/2 IN. DEEP, FORMED OF NO. 25 MSG GALV STEEL, SPACED 12 IN. OC INSTALLED PERPENDICULAR TO C-JOISTS.
4. TYPE X PANELS: NOM 5/8 IN. THICK, 4 FT WIDE GYPSUM BOARD.
5. BASE LAYER INSTALLED WITH LONG DIMENSION PERPENDICULAR TO RESILIENT CHANNELS AND SIDE JOINTS CENTERED BETWEEN C-JOISTS.

**ASSEMBLY FOR FIRE RESISTENCE WITH STEEL TRUSSES**

**DETAIL 1**



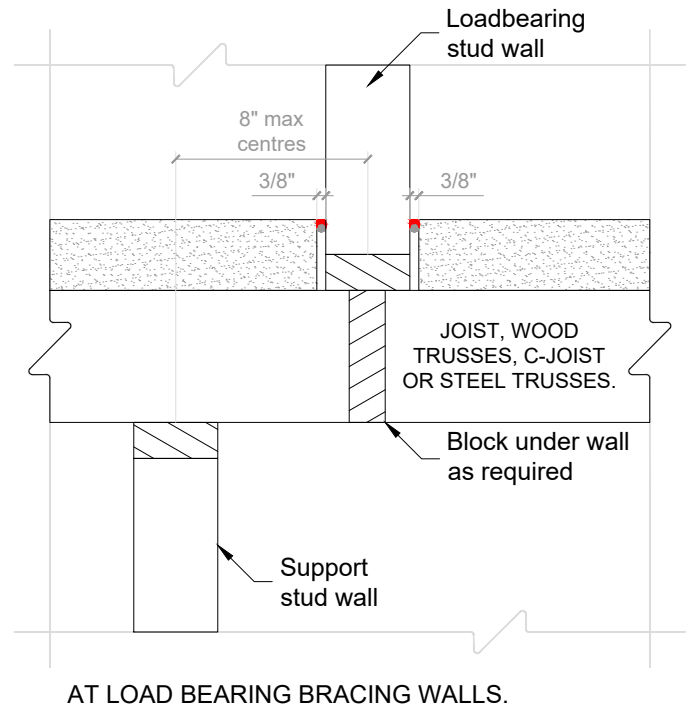
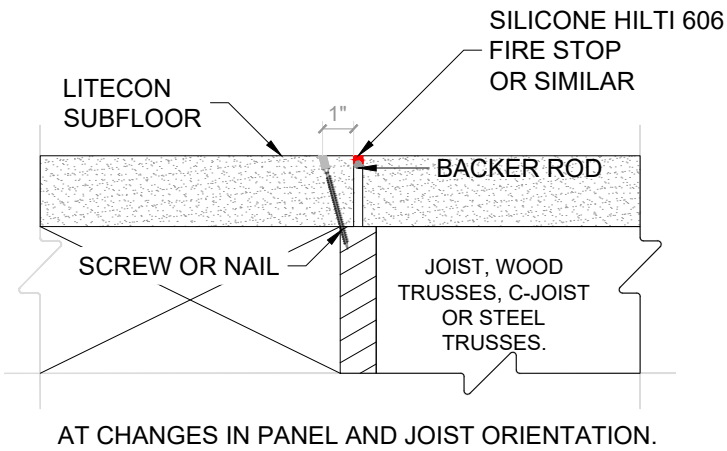
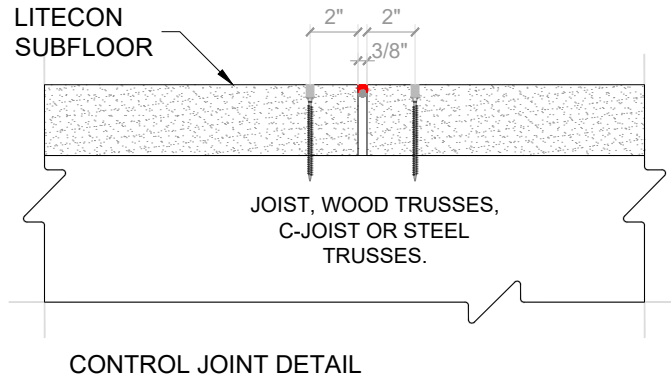
**SECTION A**



**NOTES**

1. FIBERGLASS INSULATION: NOM. 3-1/2 IN. THICK, INSTALLED 1 IN. FROM BOTTOM SURFACE OF STEEL TRUSSES.
2. INSULATION CLIPS: NOM 0.087 IN. DIAM STEEL WIRE, FRICTION FITTED BETWEEN STEEL TRUSSES, SPACED 18 IN. O.C. AND 2 IN. AWAY FROM EACH END OF THE BATT.
3. RESILIENT CHANNELS: 2-1/2 IN. WIDE BY 1/2 IN. DEEP, FORMED OF NO. 25 MSG GALV STEEL, SPACED 12 IN. OC INSTALLED PERPENDICULAR TO STEEL TRUSSES.
4. TYPE X PANELS: NOM 5/8 IN. THICK, 4 FT WIDE GYPSUM BOARD.
5. BASE LAYER INSTALLED WITH LONG DIMENSION PERPENDICULAR TO RESILIENT CHANNELS AND SIDE JOINTS CENTERED BETWEEN STEEL TRUSSES.

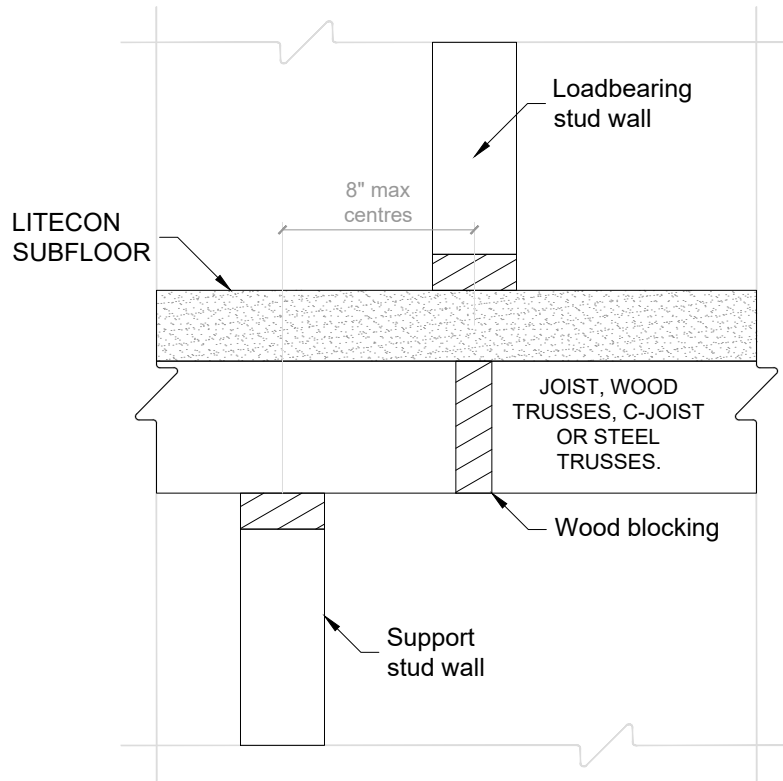
CONTROL JOINTS



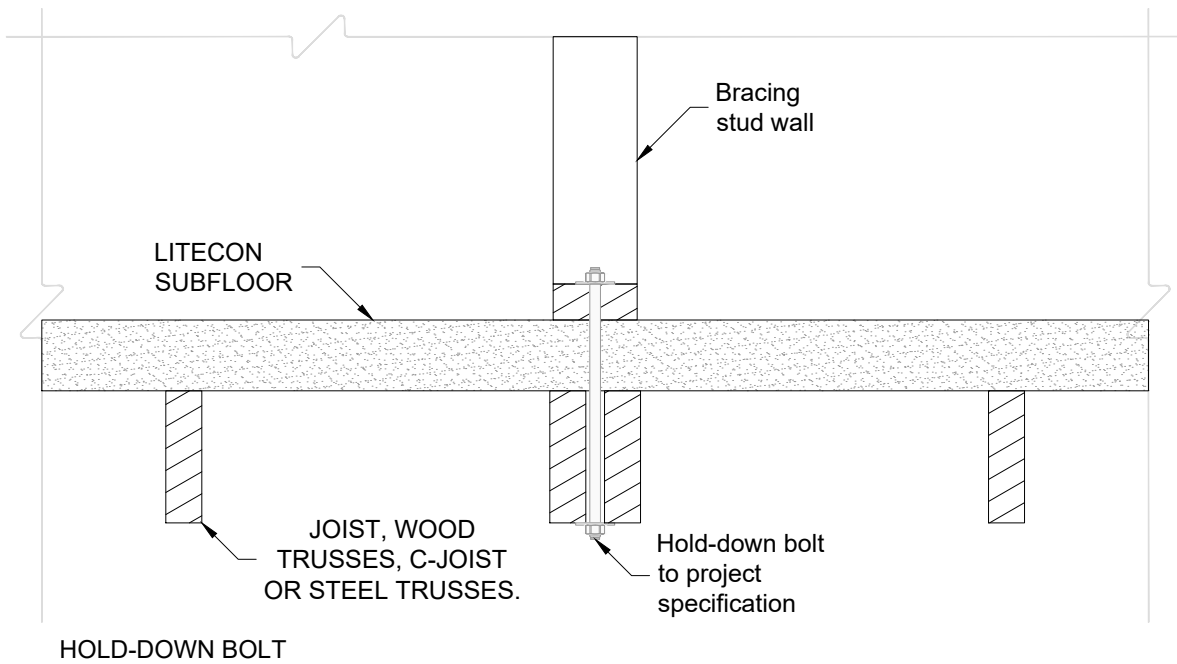
NOTES

- CONTROL JOINTS SHOULD DIVIDE THE SUBFLOOR PANELS INTO SEPARATE FLOOR DIAPHRAGMS. INSTALL CONTROL JOINTS EVERY 400 ft<sup>2</sup>.

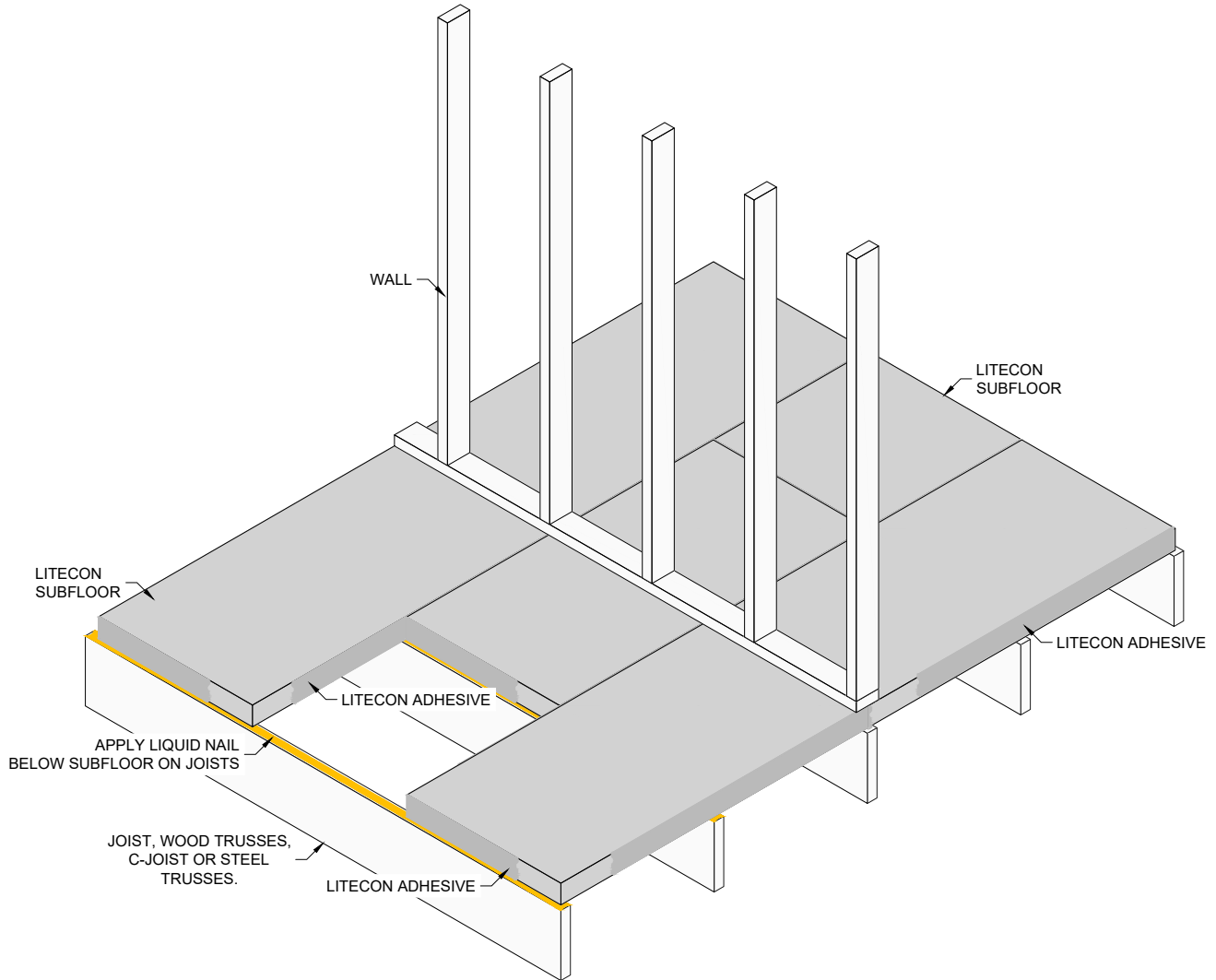
## SUBFLOOR AND STUD WALL



LITECON SUBFLOOR WITH INTERNAL LOADBEARING WALL.



## SUBFLOOR WITH WALL



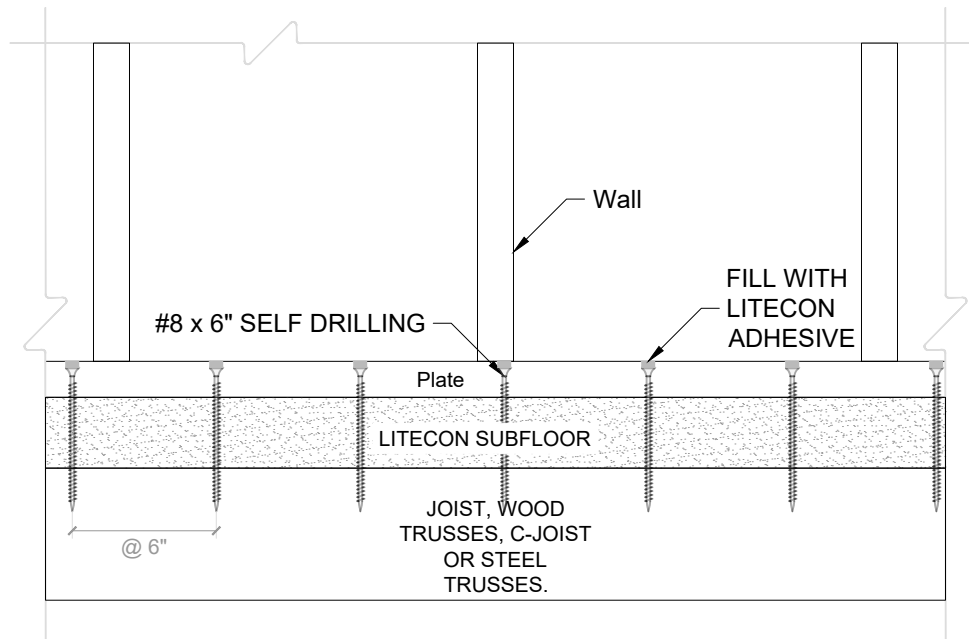
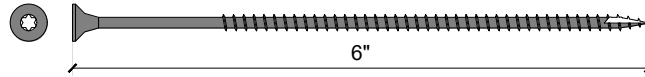


VERSION:  
December 2023

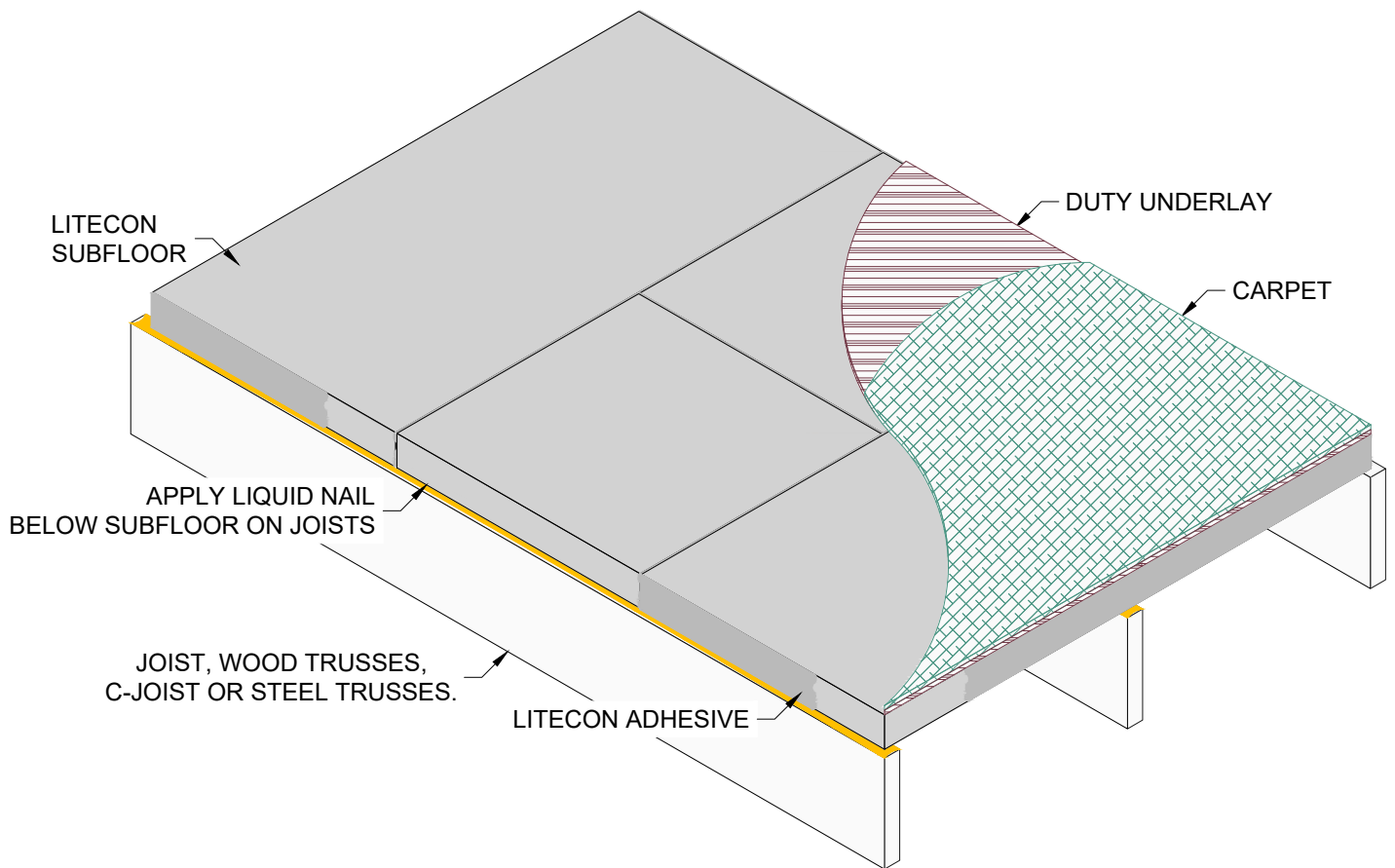
PRODUCT:  
**LITECON SUBFLOOR 2" & 3"**

## SCREWS AT DIAPHRAGM BOUNDARY

SCREWS @6" O.C. AT DIAPHRAGM BOUNDARY  
#8 x 6" SELF DRILLING



## SUBFLOOR AND CARPET





## LITECON SUBFLOOR 2" & 3"

INSTALLATION GUIDE

December 2023