

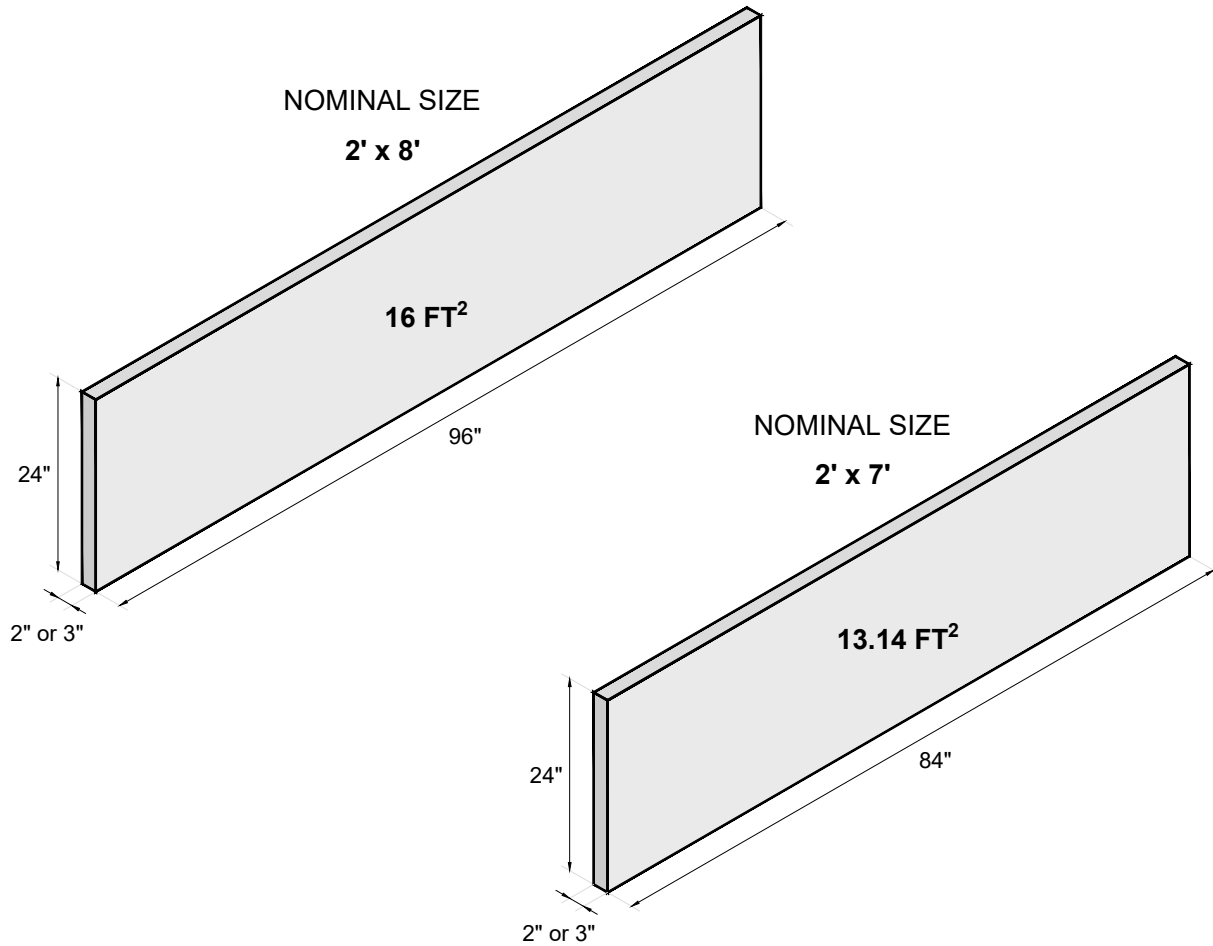


LITECON FENCE PANEL 2" or 3"

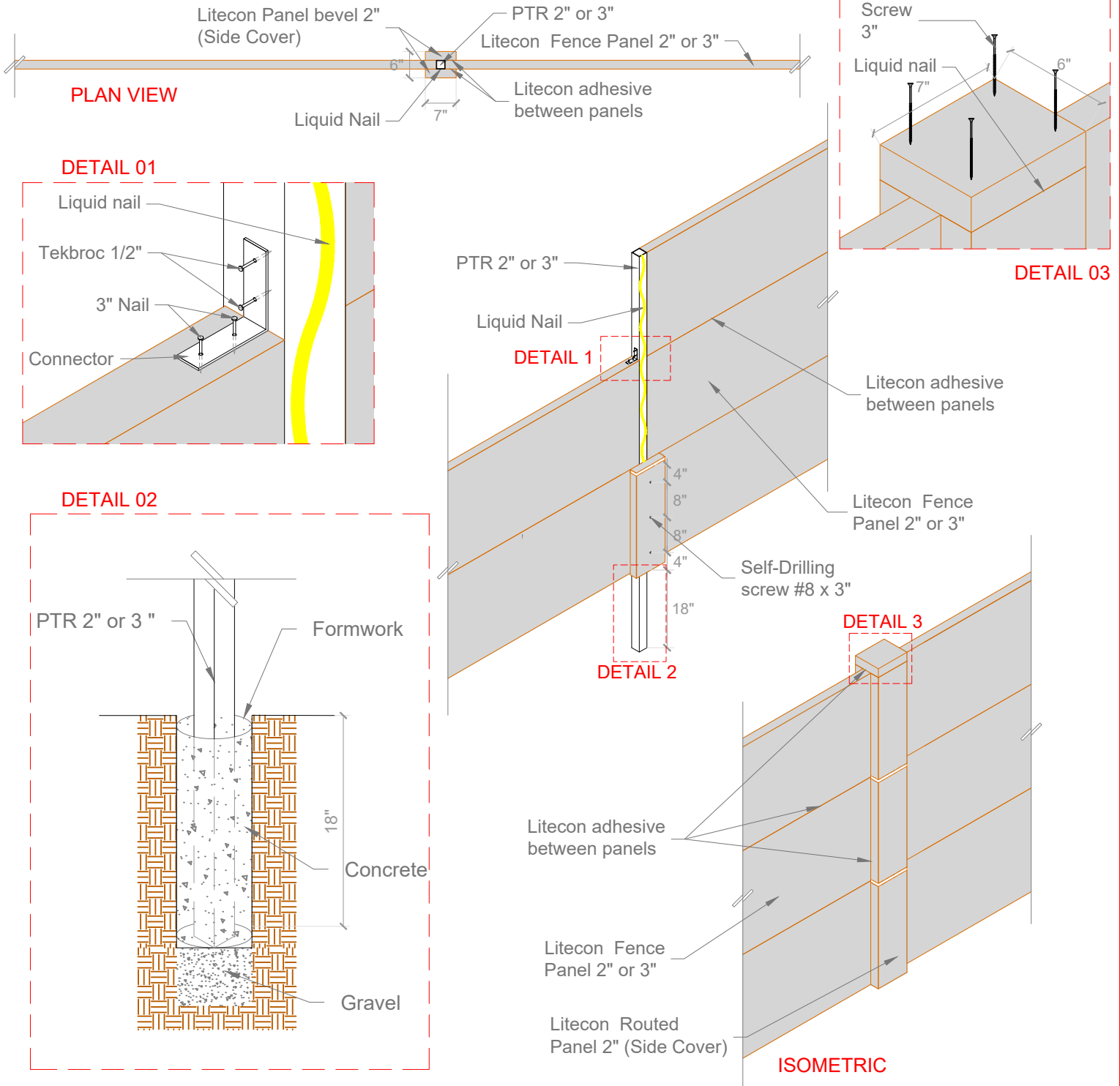
INSTALLATION GUIDE

October 2025

LITECON FENCE DIMENSIONS



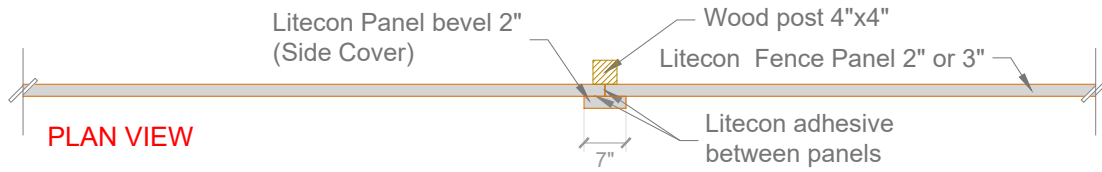
INSTALLATION WITH STEEL POST (PTR)



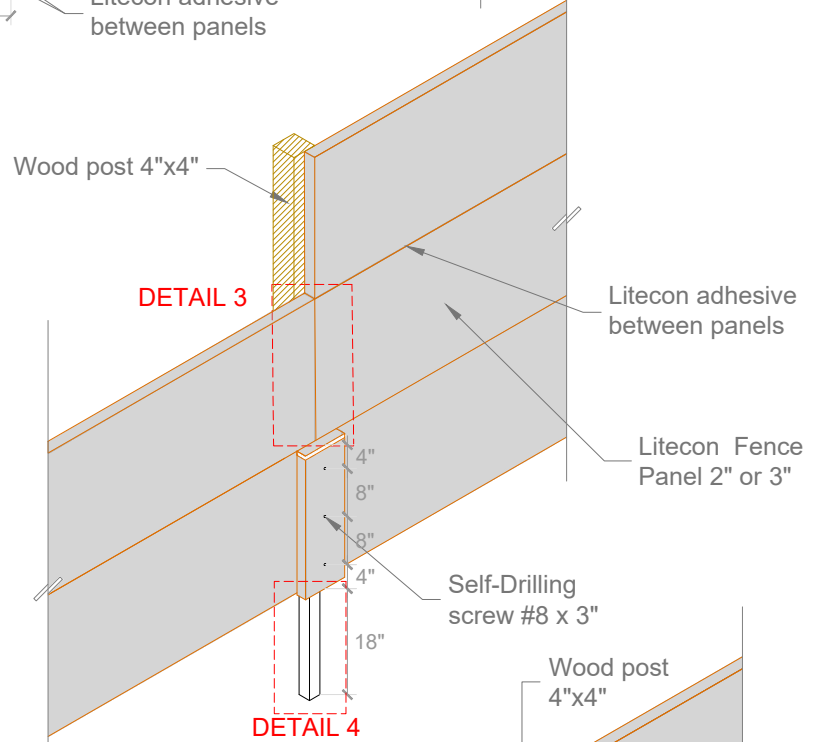
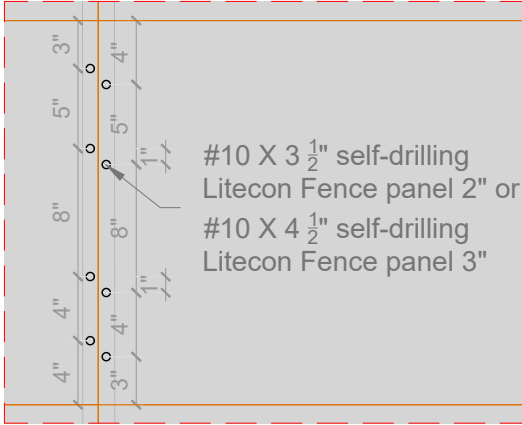
NOTES:

1. PLACE CONNECTORS ON ALL PANELS
2. SEPARATE THE PANEL 1/4" FROM THE PTR PANEL

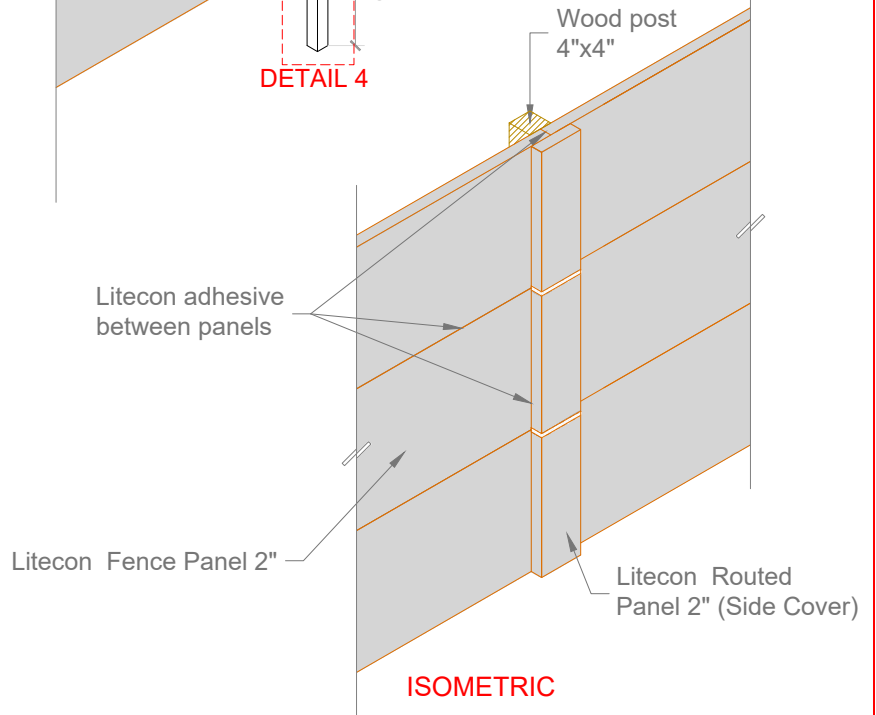
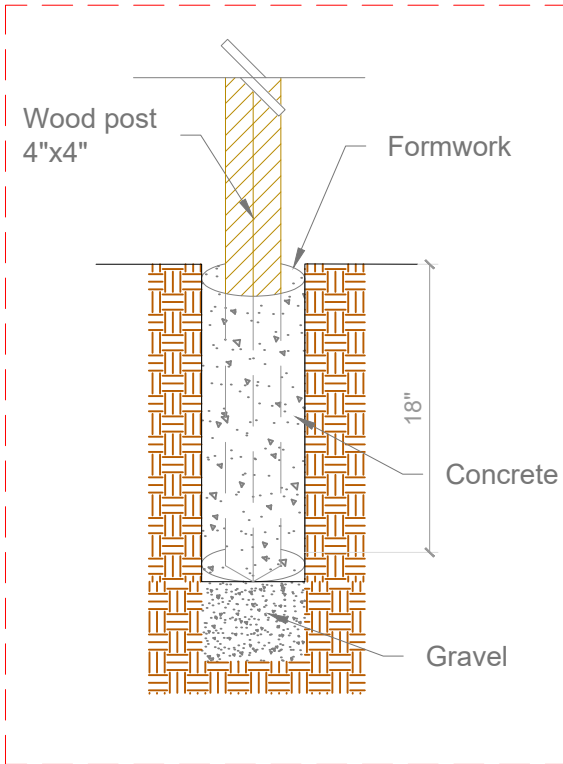
INSTALLATION WITH WOOD POST



DETAIL 03



DETAIL 04



NOTES:

1. #10 X 3 1/2" self-drilling Litecon Fence panel 2"
2. #10 X 4 1/2" self-drilling Litecon Fence panel 3"



LITECON FENCE PANEL 2" & 3"

INSTALLATION GUIDE

October 2025